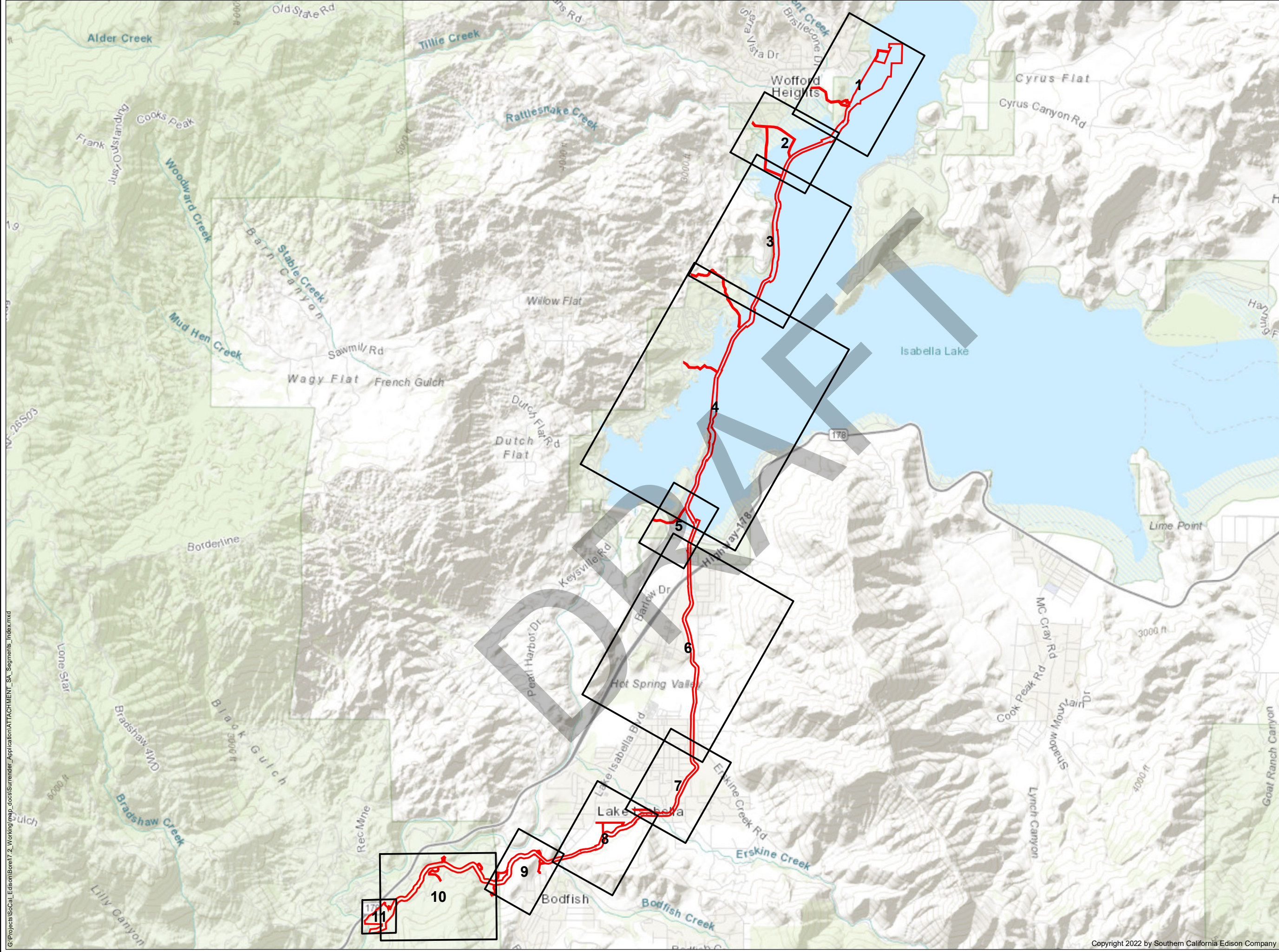


Appendix B: Borel Project Segment Map Set

DRAFT

PAGE INTENTIONALLY LEFT BLANK

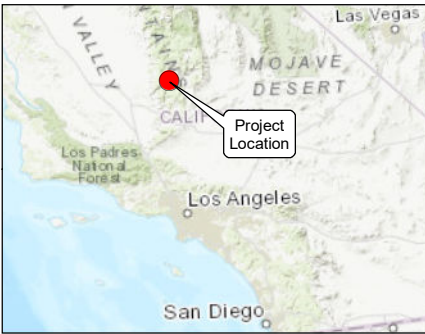


LEGEND

FERC Project Boundary #382

Map Page Extent

*SOURCE: HDR (2021), SoCal Edison (2021).



DECOMMISSIONING
PLAN SEGMENTS
OVERVIEW

BOREL HYDROELECTRIC LICENSE SURRENDER PROJECT

N
W
E
S

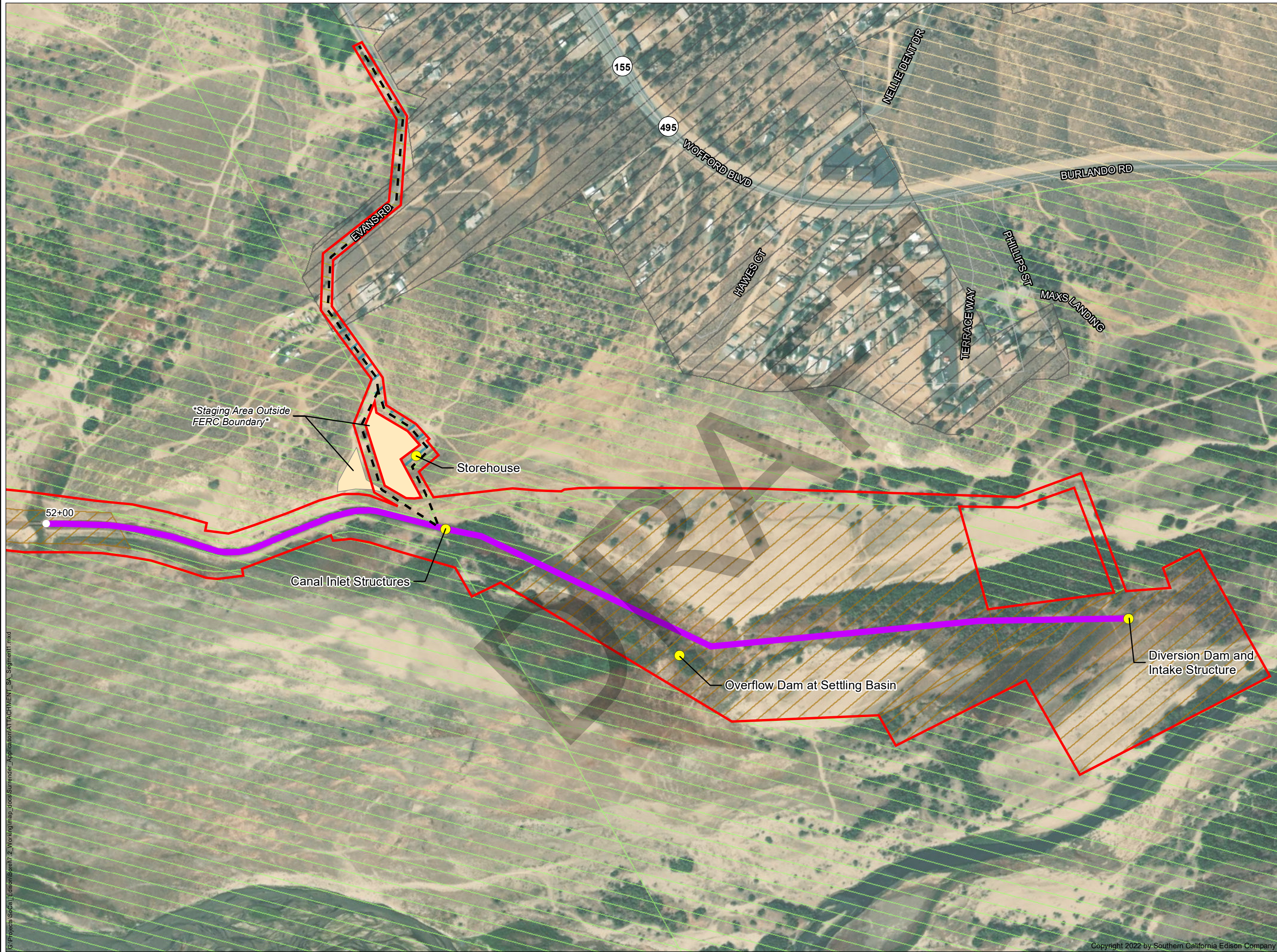
Date: 12/9/2022

00.51

Miles

Projection: California State Plane Zone 5
Datum: NAD 83

Southern California Edison (SCE) has no reason to believe that there are any inaccuracies or defects with information incorporated in this work and make no representations of any kind, including, but not limited to, the warranties of merchantability or fitness for a particular use, nor are any such warranties to be implied, with respect to the information or data, furnished herein. No part of this map may be reproduced or transmitted in any form or by any means, electronic or mechanical, including photocopying and recording system, except as expressly permitted in writing by SCE.

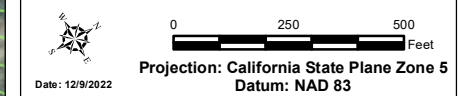


LEGEND

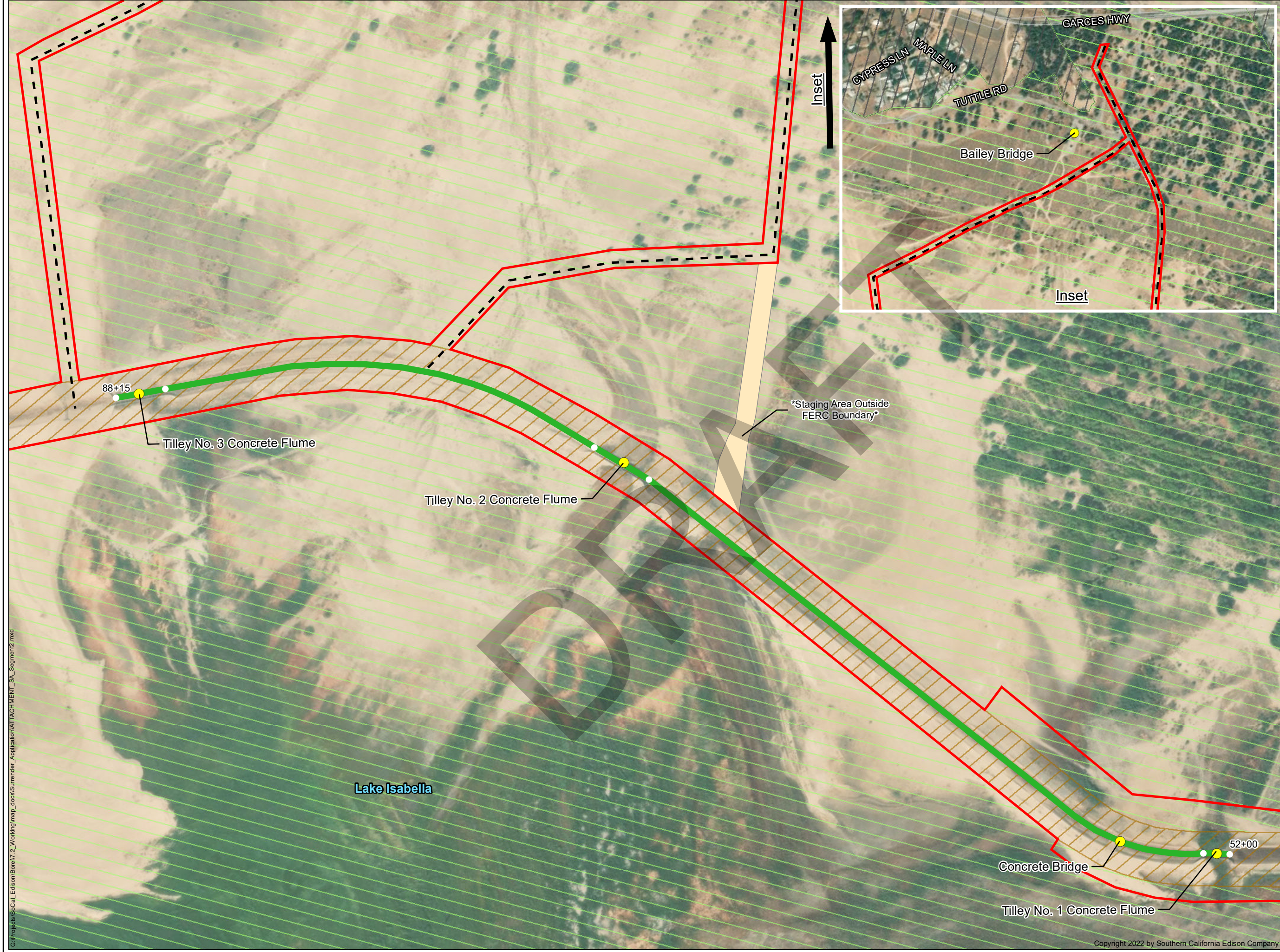
- FERC Project Boundary #382
- Segment 1
- Project Feature
- Decomissioning Access & Staging**
 - Access Road
 - Staging Area
- Land Ownership**
 - BLM
 - Kern County
 - Private
 - SCE
 - Sequoia National Forest
 - Corps



SEGMENT #1
DIVERSION DAM AND INTAKE STRUCTURE TO TILLEY NO. 1 CONCRETE FLUME
BOREL HYDROELECTRIC PROJECT
FERC PROJECT NO. 382



Southern California Edison (SCE) has no reason to believe that there are any inaccuracies or defects with information incorporated in this work and make no representations of any kind, including, but not limited to, the warranties of merchantability or fitness for a particular use, nor are any such warranties to be implied, with respect to the information or data, furnished herein. No part of this map may be reproduced or transmitted in any form or by any means, electronic or mechanical, including photocopying and recording system, except as expressly permitted in writing by SCE.



LEGEND

FERC Project Boundary #382

Segment 2

Decomissioning Access & Staging

Access Road

Land Ownership

Page 2 of 11

*SOURCE: HDR (2022), SoCal Edison (2021).



SOUTHERN CALIFORNIA
EDISON®
An EDISON INTERNATIONAL® Company

SEGMENT #2

TILLEY NO. 1 CONCRETE
FLUME TO TILLEY NO. 3
CONCRETE FLUME

BOREL HYDROELECTRIC PROJECT
FERC PROJECT NO. 382

Date: 12/9/2022

0150300

Feet

Projection: California State Plane Zone 5
Datum: NAD 83

Southern California Edison (SCE) has no reason to believe that there are any inaccuracies or defects with information incorporated in this work and make no representations of any kind, including, but not limited to, the warranties of merchantability or fitness for a particular use, nor are any such warranties to be implied, with respect to the information or data, furnished herein. No part of this map may be reproduced or transmitted in any form or by any means, electronic or mechanical, including photocopying and recording system, except as expressly permitted in writing by SCE.

G:\Projects\SoCal Edison\Borel\7.2_Working\map_docs\Surrender_Application\ATTACHMENT_SA_Segment2.mxd



LEGEND

FERC Project Boundary #382

Segment 3

Project Feature

Non-Project Feature

Decomissioning Access & Staging

Access Road

Staging Area

Land Ownership

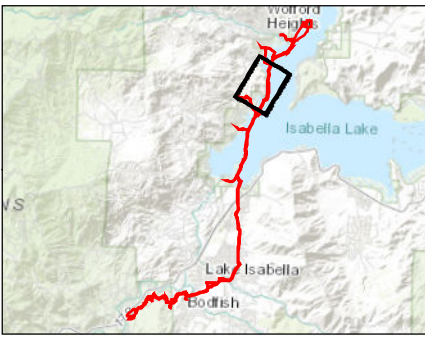
Private

SCE

Sequoia National Forest

Page 3 of 11

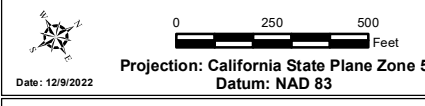
*SOURCE: HDR (2022), SoCal Edison (2021).



SEGMENT #3

TILLEY NO. 3 CONCRETE FLUME TO END OF SCE LAND

BOREL HYDROELECTRIC PROJECT
FERC PROJECT NO. 382



Southern California Edison (SCE) has no reason to believe that there are any inaccuracies or defects with information incorporated in this work and make no representations of any kind, including, but not limited to, the warranties of merchantability or fitness for a particular use, nor are any such warranties to be implied, with respect to the information or data, furnished herein. No part of this map may be reproduced or transmitted in any form or by any means, electronic or mechanical, including photocopying and recording system, except as expressly permitted in writing by SCE.

G:\Projects\SoCal Edison\Borel\2_Working\map_docs\Surrender_Application\ATTACHMENT_SA_Segment3.mxd



LEGEND

FERC Project Boundary #382

Segment 4

Project Feature

Non-Project Feature

Decomissioning Access & Staging

Access Road

Staging Area

Land Ownership

BLM

Private

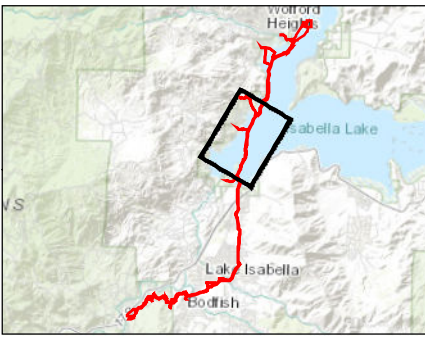
SCE

Sequoia National Forest

USACE

Page 4 of 11

*SOURCE: HDR (2022), SoCal Edison (2021).



SOUTHERN CALIFORNIA
EDISON[®]
An EDISON INTERNATIONAL[®] Company

SEGMENT #4

**END OF SCE LAND TO
AUXILLARY DAM**

BOREL HYDROELECTRIC PROJECT
FERC PROJECT NO. 382

Date: 12/9/2022

05001,000
Feet

Projection: California State Plane Zone 5
Datum: NAD 83

Southern California Edison (SCE) has no reason to believe that there are any inaccuracies or defects with information incorporated in this work and make no representations of any kind, including, but not limited to, the warranties of merchantability or fitness for a particular use, nor are any such warranties lobe implied, with respect to the information or data, furnished herein. No part of this map may be reproduced or transmitted in any form or by any means, electronic or mechanical, including photocopying and recording system, except as expressly permitted in writing by SCE.

G:\Projects\SoCal_Edison\Borel\7_2_Working\map_docs\Surrender_Application\ATTACHMENT_SA_Figments.mxd

Copyright 2022 by Southern California Edison Company



LEGEND

FERC Project Boundary #382

Segment 5

Non-Project Feature

Decomissioning Access & Staging

Access Road

Land Ownership

Private

SCE

Sequoia National Forest

USACE

Page 5 of 11

*SOURCE: HDR (2022), SoCal Edison (2021).

**SOUTHERN CALIFORNIA
EDISON®**
An EDISON INTERNATIONAL® Company

SEGMENT #5
AUXILLARY DAM
BOREL HYDROELECTRIC PROJECT
FERC PROJECT NO. 382

Date: 12/9/2022

0100200

Feet

Projection: California State Plane Zone 5
Datum: NAD 83





Southern California Edison (SCE) has no reason to believe that there are any inaccuracies or defects with information incorporated in this work and make no representations of any kind, including, but not limited to, the warranties of merchantability or fitness for a particular use, nor are any such warranties lobe implied, with respect to the information or data, furnished herein. No part of this map may be reproduced or transmitted in any form or by any means, electronic or mechanical, including photocopying and recording system, except as expressly permitted in writing by SCE.

G:\Projects\SoCal Edison\Borel\2_Working\map_docs\Surrender_Application\ATTACHMENT_SA_Segment5.mxd

Copyright 2022 by Southern California Edison Company




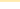



LEGEND

-  FERC Project Boundary #382
 Segment 6
 Project Feature
 Non-Project Feature

Decommissioning Access & Staging

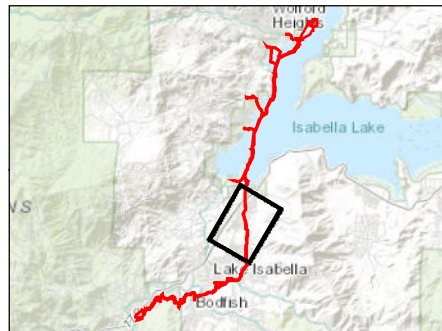
- 
- Staging Area

Land Ownership

-  BLM
-  Private
-  SCE
-  Sequoia National Forest
-  Corps

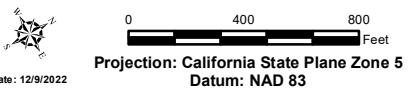
Page 6 of 11

*SOURCE: HDR (2022), SoCal Edison (2021).

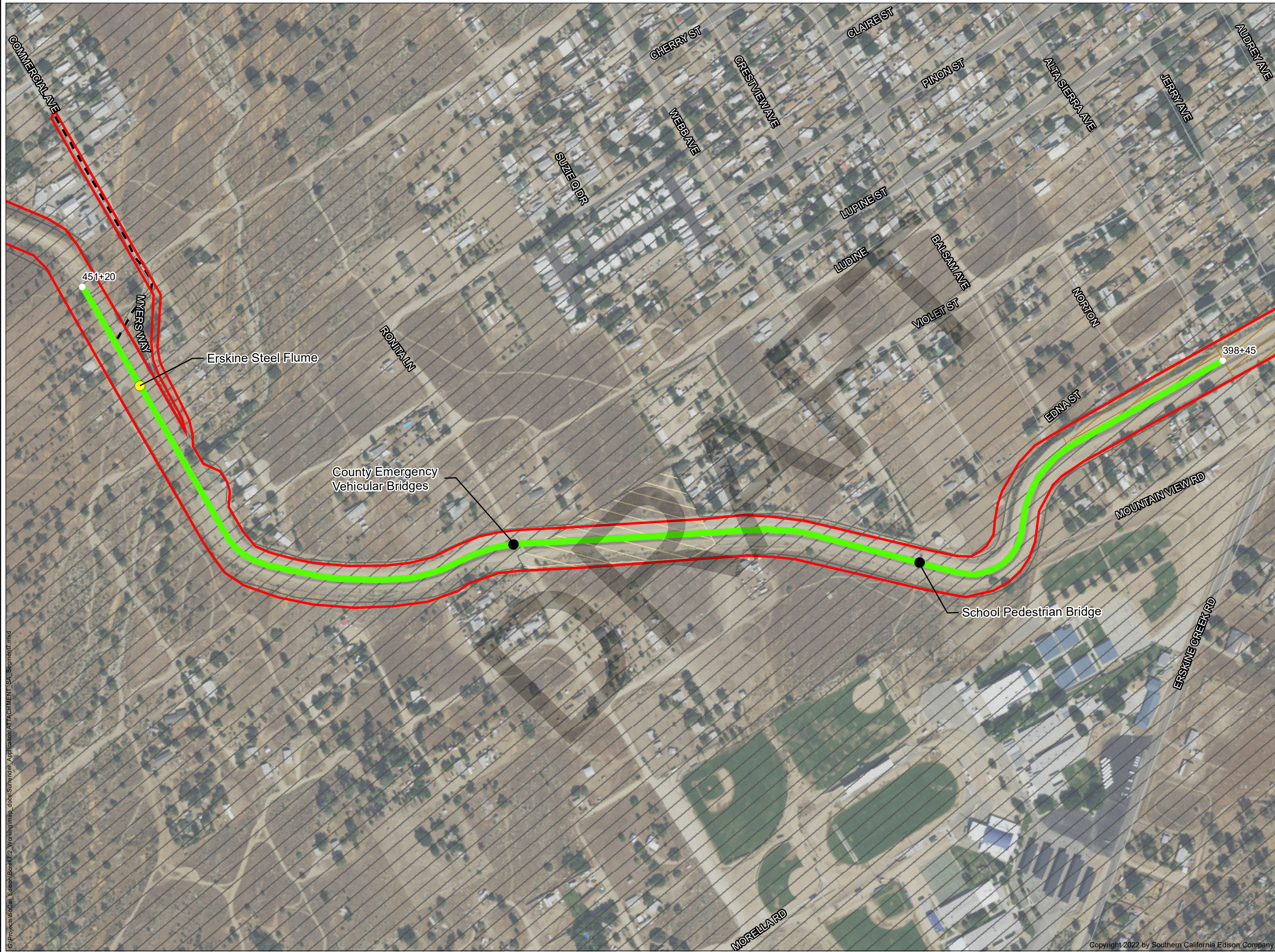


SEGMENT #6

AUXILLARY DAM TO ALTA SIERRA AVENUE

BOREL HYDROELECTRIC PROJECT
FERC PROJECT NO. 382

Southern California Edison (SCE) has no reason to believe that there are any inaccuracies or defects with information incorporated in this work and make no representations of any kind, including, but not limited to, the warranties of merchantability or fitness for a particular use, nor are any such warranties to be implied, with respect to the information or data, furnished herein. No part of this map may be reproduced or transmitted in any form or by any means, electronic or mechanical, including photocopying and recording system, except as expressly permitted in writing by SCE.



LEGEND

- FERC Project Boundary #382
- Segment 7
- Project Feature
- Non-Project Feature
- Decomissioning Access & Staging**
 - Access Road
- Land Ownership**
 - BLM
 - Private
 - SCE

Page 7 of 11

*SOURCE: HDR (2022), SoCal Edison (2021).



SEGMENT #7

ALTA SIERRA AVENUE TO ERSKINE STEEL FLUME

BOREL HYDROELECTRIC PROJECT
FERC PROJECT NO. 382



Date: 12/9/2022
Projection: California State Plane Zone 5
Datum: NAD 83
Southern California Edison (SCE) has no reason to believe that there are any inaccuracies or defects with information incorporated in this work and make no representations of any kind, including, but not limited to, the warranties of merchantability or fitness for a particular use, nor are any such warranties to be implied, with respect to the information or data, furnished herein. No part of this map may be reproduced or transmitted in any form or by any means, electronic or mechanical, including photocopying and recording system, except as expressly permitted in writing by SCE.



LEGEND

FERC Project Boundary #382

Segment 8

Project Feature

Decomissioning Access & Staging

Access Road

Land Ownership

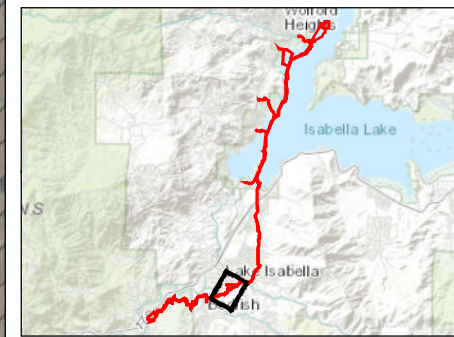
BLM


Private

SCE

Page 8 of 11

*SOURCE: HDR (2022), SoCal Edison (2021).






**SOUTHERN CALIFORNIA
EDISON®**
An EDISON INTERNATIONAL® Company

SEGMENT #8

**ERSKINE STEEL FLUME
TO BODFISH SIPHON**

**BOREL HYDROELECTRIC PROJECT
FERC PROJECT NO. 382**



**Projection: California State Plane Zone 5
Datum: NAD 83**

0200400

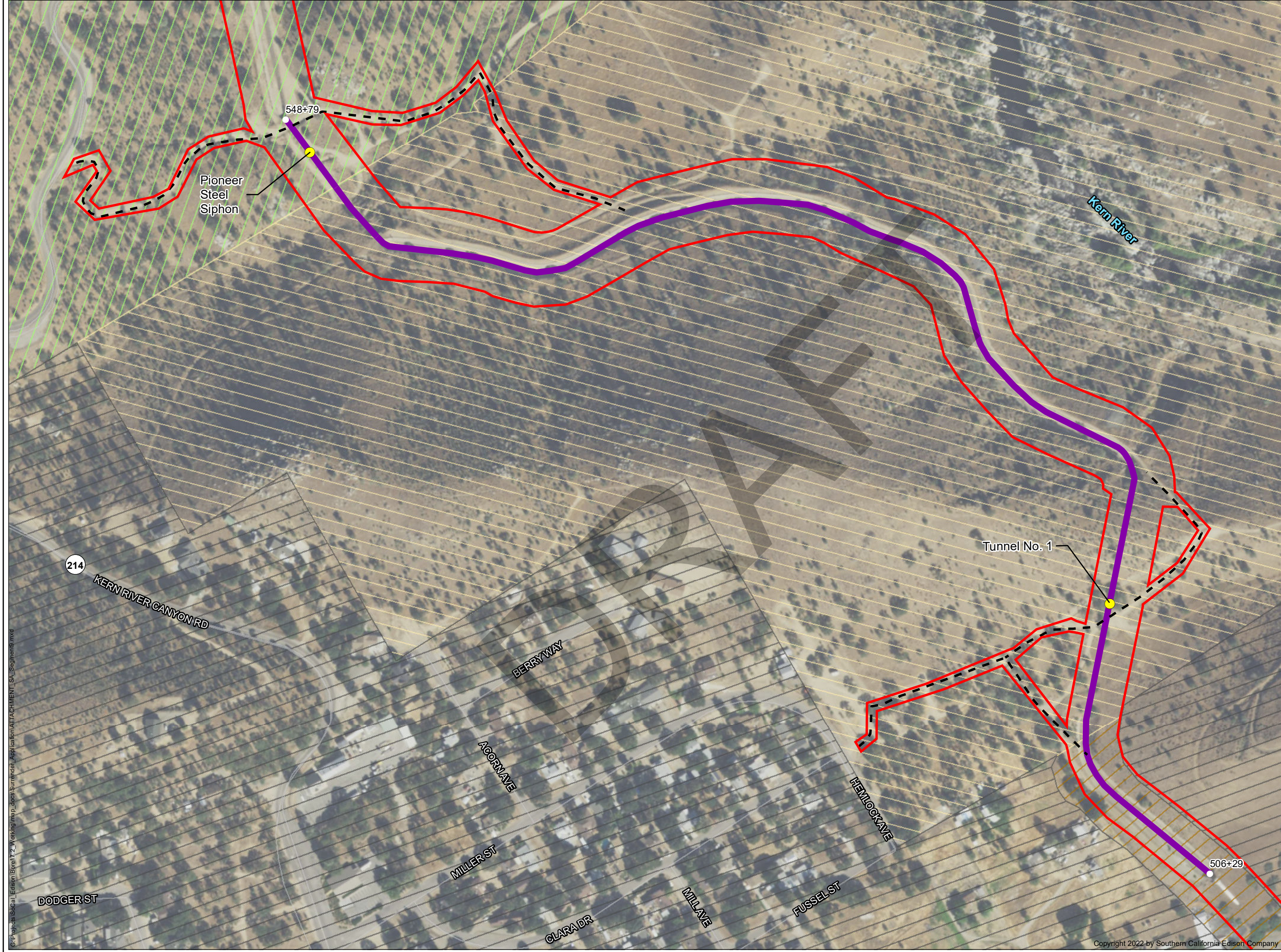
Feet

Date: 12/9/2022

Southern California Edison (SCE) has no reason to believe that there are any inaccuracies or defects with information incorporated in this work and make no representations of any kind, including, but not limited to, the warranties of merchantability or fitness for a particular use, nor are any such warranties to be implied, with respect to the information or data, furnished herein. No part of this map may be reproduced or transmitted in any form or by any means, electronic or mechanical, including photocopying and recording system, except as expressly permitted in writing by SCE.

G:\Projects\SoCal Edison\Borel\7.2 Working\map_docs\Surrender_Application\ATTACHMENT_SA_Segment8.mxd

Copyright 2022 by Southern California Edison Company



LEGEND

- FERC Project Boundary #382
- Segment 9
- Project Feature
- Decommissioning Access & Staging**
 - Access Road
- Land Ownership**
 - BLM
 - Private
 - SCE
 - Sequoia National Forest



SEGMENT #9

**BODFISH SIPHON TO
PIONEER STEEL SIPHON**

BOREL HYDROELECTRIC PROJECT
FERC PROJECT NO. 382

Date: 12/9/2022

Projection: California State Plane Zone 5
Datum: NAD 83

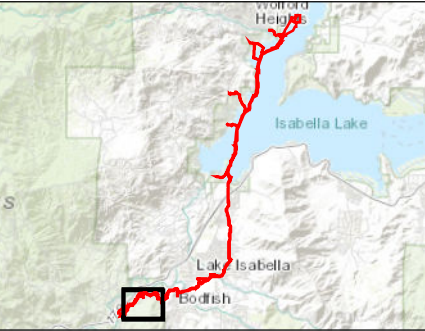
Southern California Edison (SCE) has no reason to believe that there are any inaccuracies or defects with information incorporated in this work and make no representations of any kind, including, but not limited to, the warranties of merchantability or fitness for a particular use, nor are any such warranties to be implied, with respect to the information or data, furnished herein. No part of this map may be reproduced or transmitted in any form or by any means, electronic or mechanical, including photocopying and recording system, except as expressly permitted in writing by SCE.

G:\Projects\SoCal Edison\Borel\12 Working\map_docs\Surrender_Application\ATTACHMENT_SA_Segment9.mxd



LEGEND

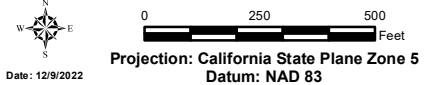
- FERC Project Boundary #382
- Segment 10
- Project Feature
- Decomissioning Access & Staging**
- Access Road
- Staging Area
- Land Ownership**
- Sequoia National Forest



SEGMENT #10

**PIONEER STEEL SIPHON
TO FOREBAY STRUCTURE**

BOREL HYDROELECTRIC PROJECT
FERC PROJECT NO. 382



Date: 12/9/2022
Projection: California State Plane Zone 5
Datum: NAD 83
Southern California Edison (SCE) has no reason to believe that there are any inaccuracies or defects with information incorporated in this work and make no representations of any kind, including, but not limited to, the warranties of merchantability or fitness for a particular use, nor are any such warranties to be implied, with respect to the information or data, furnished herein. No part of this map may be reproduced or transmitted in any form or by any means, electronic or mechanical, including photocopying and recording system, except as expressly permitted in writing by SCE.



LEGEND

- FERC Project Boundary #382
- Segment 11
- Project Feature
- Non-Project Feature
- Decommissioning Access & Staging**
 - Access Road
 - Staging Area
- Land Ownership**
 - Sequoia National Forest

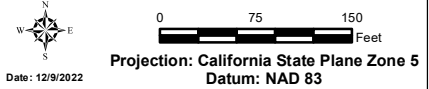
*SOURCE: HDR (2022), SoCal Edison (2021).



SEGMENT #11

**FOREBAY STRUCTURE
TO TAILRACE**

BOREL HYDROELECTRIC PROJECT
FERC PROJECT NO. 382



Southern California Edison (SCE) has no reason to believe that there are any inaccuracies or defects with information incorporated in this work and make no representations of any kind, including, but not limited to, the warranties of merchantability or fitness for a particular use, nor are any such warranties to be implied, with respect to the information or data, furnished herein. No part of this map may be reproduced or transmitted in any form or by any means, electronic or mechanical, including photocopying and recording system, except as expressly permitted in writing by SCE.