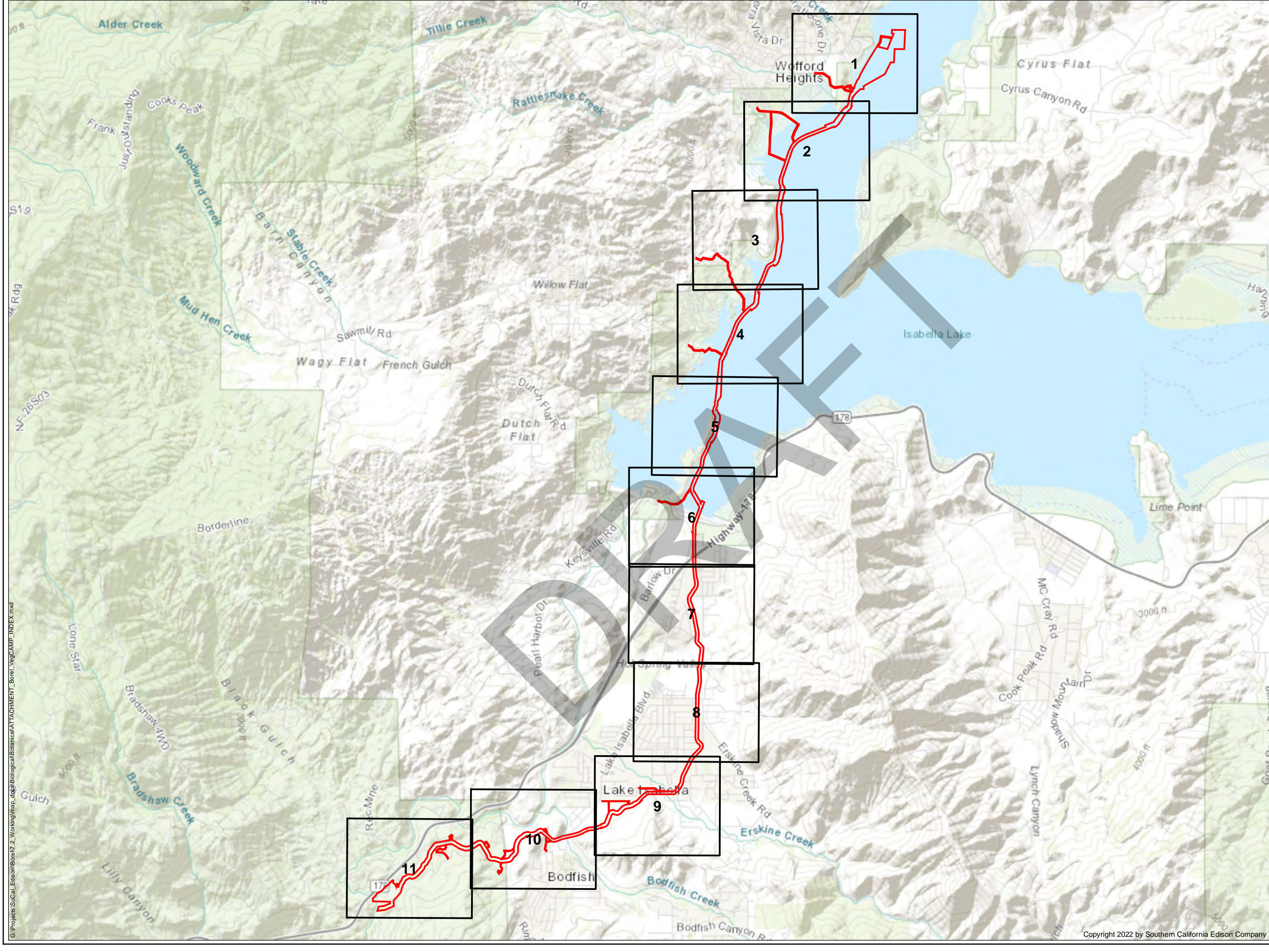


## **Attachment A: CDFW VegCAMP Alliances**

DRAFT

PAGE INTENTIONALLY LEFT BLANK



### LEGEND

FERC Project Boundary #382

Map Page Extent

\*SOURCE: HDR (2021), SoCal Edison (2021), ESRI Topo (2021).

**SOUTHERN CALIFORNIA EDISON**  
An EDISON INTERNATIONAL® Company

**CDFW VEGCAMP ALLIANCES OVERVIEW**

BOREL HYDROELECTRIC LICENSE SURRENDER PROJECT

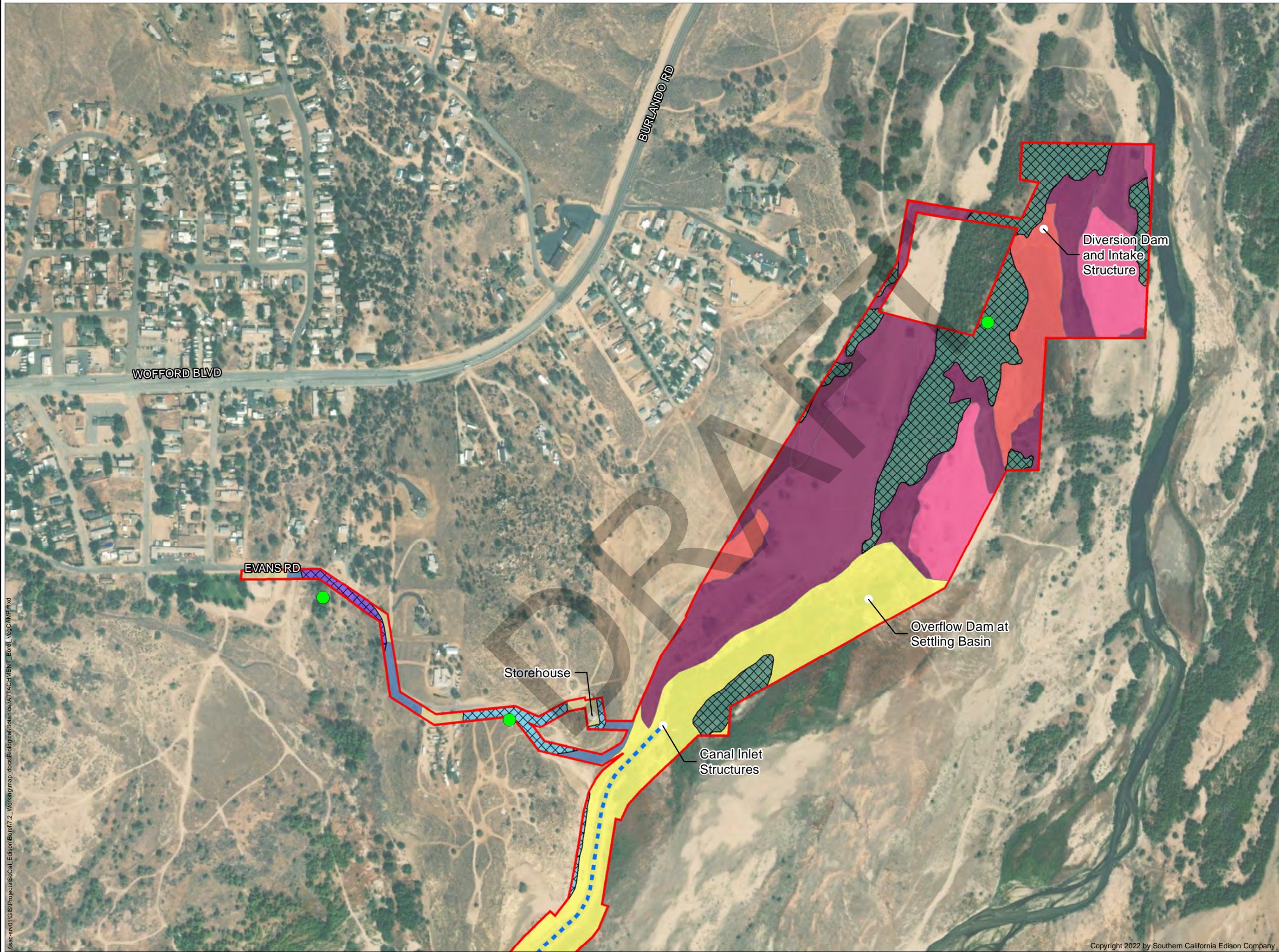
Projection: StatePlane California V FIPS 0405 Feet  
Datum: NAD 83

Date: 12/9/2022

Southern California Edison (SCE) has no reason to believe that there are any inaccuracies or defects with information incorporated in this work and make no representations of any kind, including, but not limited to, the warranties of merchantability or fitness for a particular use, nor are any such warranties to be implied, with respect to the information or data, furnished herein. No part of this map may be reproduced or transmitted in any form or by any means, electronic or mechanical, including photocopying and recording system, except as expressly permitted in writing by SCE.

G:\Projects\SoCal Edison\Borel\7.2\_Working\map\_dgs\Biological\Botanical\ATTACHMENT\_Borel\_VegCAMP\_INDEX.mxd

Copyright 2022 by Southern California Edison Company



**LEGEND**

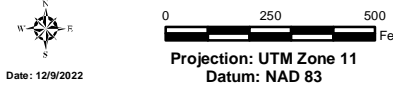
- FERC Project Boundary #382
- Borel Canal
- Project Feature
- CDFW Sensitive Natural Communities
- Sampling Point
- VegCAMP Alliance**
  - Built Up & Urban Disturbance Mapping Unit (includes development, mines and borrow pits)
  - California Annual and Perennial Grassland Macrogroup
  - Californian warm temperate marsh/seep Group
  - Eriogonum wrightii*
  - Populus fremontii* - *Fraxinus velutina* - *Salix gooddingii* Alliance
  - Reservoirs Mapping Unit
  - River & Lacustrine Flats & Streambeds Mapping Unit
  - Salix gooddingii* - *Salix laevigata* Alliance
  - Water Mapping Unit

\*SOURCE: HDR (2022), SoCal Edison (2021), CDFW (2021), ESRI Aerial Imagery.



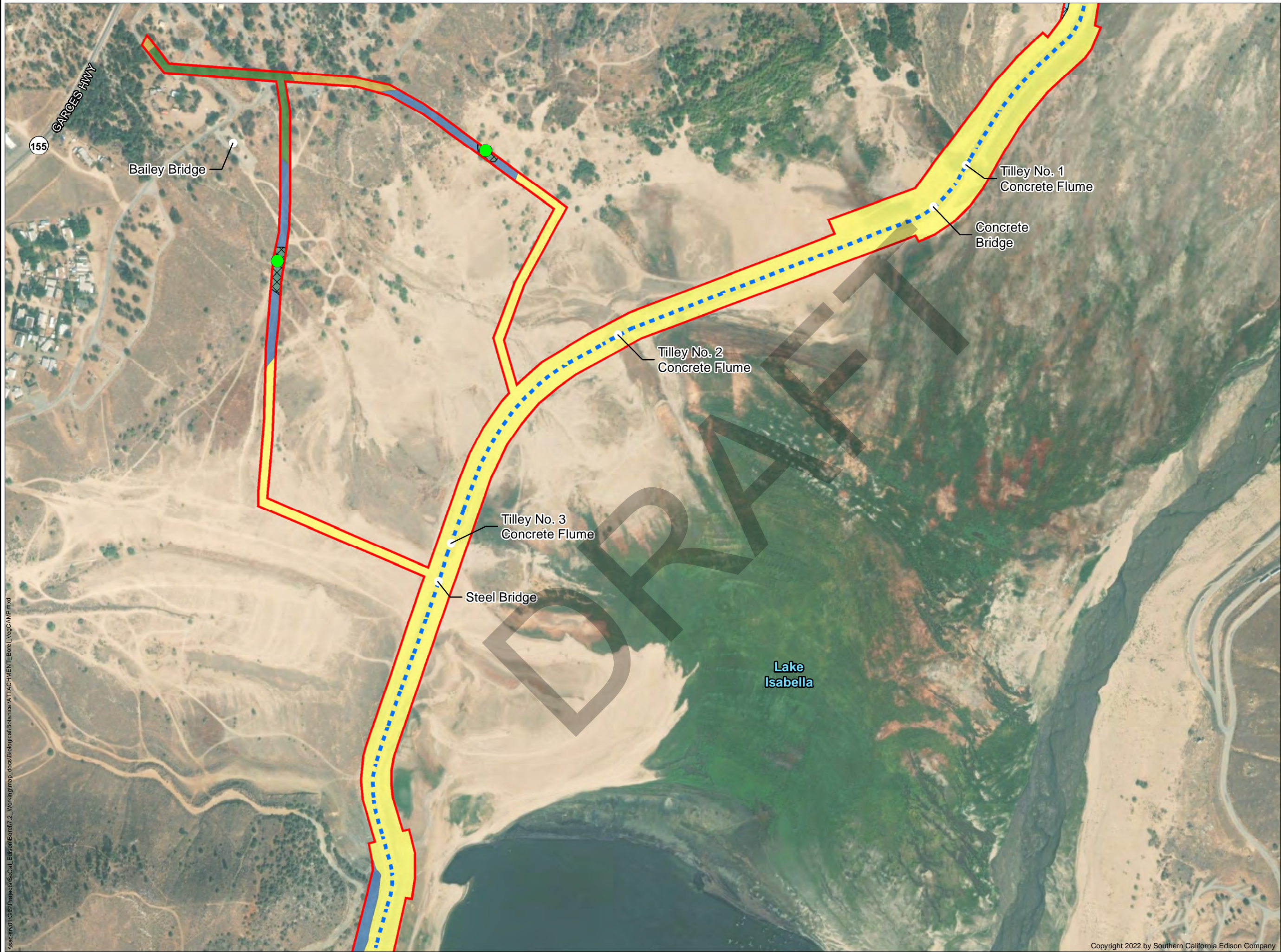
**CDFW VEGCAMP ALLIANCES**

BOREL HYDROELECTRIC LICENSE SURRENDER PROJECT  
PAGE 1 OF 11



Southern California Edison (SCE) has no reason to believe that there are any inaccuracies or defects with information incorporated in this work and make no representations of any kind, including, but not limited to, the warranties of merchantability or fitness for a particular use, nor are any such warranties to be implied, with respect to the information or data, furnished herein. No part of this map may be reproduced or transmitted in any form or by any means, electronic or mechanical, including photocopying and recording system, except as expressly permitted in writing by SCE.

\\sac-sv01\GIS\Projects\SoCal Edison\Borel\7.2\_Working\map\_docs\Biological\Botanical\ATTACHMENT\_Borel\_VegCAMP.mxd



**LEGEND**

- FERC Project Boundary #382
- Borel Canal
- Project Feature
- CDFW Sensitive Natural Communities
- Sampling Point

**VegCAMP Alliance**

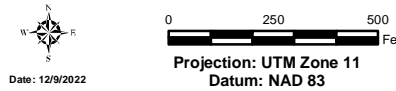
- California Annual and Perennial Grassland Macrogroup
- Eriogonum wrightii*
- Exotic Trees and Planted
- Juniperus californica*
- Quercus wislizeni* (tree) Alliance
- Reservoirs Mapping Unit
- Salix gooddingii* - *Salix laevigata* Alliance

\*SOURCE: HDR (2022), SoCal Edison (2021), CDFW (2021), ESRI Aerial Imagery.



**CDFW VEGCAMP ALLIANCES**

BOREL HYDROELECTRIC LICENSE SURRENDER PROJECT  
PAGE 2 OF 11



Date: 12/9/2022  
Projection: UTM Zone 11  
Datum: NAD 83  
Southern California Edison (SCE) has no reason to believe that there are any inaccuracies or defects with information incorporated in this work and make no representations of any kind, including, but not limited to, the warranties of merchantability or fitness for a particular use, nor are any such warranties to be implied, with respect to the information or data, furnished herein. No part of this map may be reproduced or transmitted in any form or by any means, electronic or mechanical, including photocopying and recording system, except as expressly permitted in writing by SCE.

\\sac-srv01\GIS\Projects\SoCal Edison\Borel\2\_Working\map\_docs\Biological\Botanical\ATTACHMENT\_Borel\_VegCAMP.mxd



**LEGEND**

- FERC Project Boundary #382
- Borel Canal
- Project Feature
- CDFW Sensitive Natural Communities
- Sampling Point

**VegCAMP Alliance**

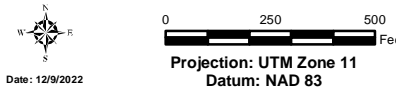
- Built Up & Urban Disturbance Mapping Unit (includes development, mines and borrow pits)
- California Annual and Perennial Grassland Macrogroup
- Eriogonum wrightii*
- Juniperus californica*
- Quercus wislizeni* (tree) Alliance
- Reservoirs Mapping Unit

\*SOURCE: HDR (2022), SoCal Edison (2021), CDFW (2021), ESRI Aerial Imagery.



**CDFW VEGCAMP ALLIANCES**

BOREL HYDROELECTRIC LICENSE SURRENDER PROJECT  
PAGE 3 OF 11



Southern California Edison (SCE) has no reason to believe that there are any inaccuracies or defects with information incorporated in this work and make no representations of any kind, including, but not limited to, the warranties of merchantability or fitness for a particular use, nor are any such warranties to be implied, with respect to the information or data, furnished herein. No part of this map may be reproduced or transmitted in any form or by any means, electronic or mechanical, including photocopying and recording system, except as expressly permitted in writing by SCE.



LEGEND

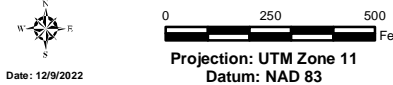
- FERC Project Boundary #382
- Borel Canal
- Project Feature
- CDFW Sensitive Natural Communities
- Sampling Point
- VegCAMP Alliance**
  - California Annual and Perennial Grassland Macrogroup
  - Eriogonum wrightii*
  - Reservoirs Mapping Unit

\*SOURCE: HDR (2022), SoCal Edison (2021), CDFW (2021), ESRI Aerial Imagery.



CDFW VEGCAMP ALLIANCES

BOREL HYDROELECTRIC LICENSE SURRENDER PROJECT  
PAGE 4 OF 11



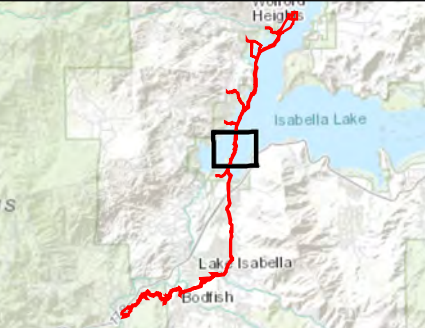
Southern California Edison (SCE) has no reason to believe that there are any inaccuracies or defects with information incorporated in this work and make no representations of any kind, including, but not limited to, the warranties of merchantability or fitness for a particular use, nor are any such warranties to be implied, with respect to the information or data, furnished herein. No part of this map may be reproduced or transmitted in any form or by any means, electronic or mechanical, including photocopying and recording system, except as expressly permitted in writing by SCE.



LEGEND

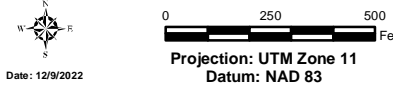
- FERC Project Boundary #382
- Borel Canal
- Project Feature
- Sampling Point
- VegCAMP Alliance**
  - California Annual and Perennial Grassland Macrogroup
  - Reservoirs Mapping Unit

\*SOURCE: HDR (2022), SoCal Edison (2021), CDFW (2021), ESRI Aerial Imagery.



CDFW VEGCAMP ALLIANCES

BOREL HYDROELECTRIC LICENSE SURRENDER PROJECT  
PAGE 5 OF 11



Southern California Edison (SCE) has no reason to believe that there are any inaccuracies or defects with information incorporated in this work and make no representations of any kind, including, but not limited to, the warranties of merchantability or fitness for a particular use, nor are any such warranties to be implied, with respect to the information or data, furnished herein. No part of this map may be reproduced or transmitted in any form or by any means, electronic or mechanical, including photocopying and recording system, except as expressly permitted in writing by SCE.



**LEGEND**

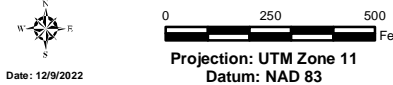
- FERC Project Boundary #382
- Borel Canal
- Non-Project Feature
- VegCAMP Alliance**
  - Built Up & Urban Disturbance Mapping Unit (includes development, mines and borrow pits)
  - California Annual and Perennial Grassland Macrogroup
  - Reservoirs Mapping Unit

\*SOURCE: HDR (2022), SoCal Edison (2021), CDFW (2021), ESRI Aerial Imagery.



**CDFW VEGCAMP ALLIANCES**

BOREL HYDROELECTRIC LICENSE SURRENDER PROJECT  
PAGE 6 OF 11



Projection: UTM Zone 11  
Datum: NAD 83

Southern California Edison (SCE) has no reason to believe that there are any inaccuracies or defects with information incorporated in this work and make no representations of any kind, including, but not limited to, the warranties of merchantability or fitness for a particular use, nor are any such warranties to be implied, with respect to the information or data, furnished herein. No part of this map may be reproduced or transmitted in any form or by any means, electronic or mechanical, including photocopying and recording system, except as expressly permitted in writing by SCE.

\\sac-sr01\GIS\Projects\SoCal Edison\Borel\7.2\_Working\map\_docs\Biological\Botanical\ATTACHMENT\_Borel\_VegCAMP.mxd



**LEGEND**

- FERC Project Boundary #382
- Borel Canal
- Project Feature
- Non-Project Feature
- Sampling Point

**VegCAMP Alliance**

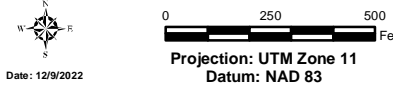
- Built Up & Urban Disturbance Mapping Unit (includes development, mines and borrow pits)
- California Annual and Perennial Grassland Macrogroup
- Pinus sabiniana*
- Quercus douglasii*
- Quercus wislizeni* (tree) Alliance

\*SOURCE: HDR (2022), SoCal Edison (2021), CDFW (2021), ESRI Aerial Imagery.

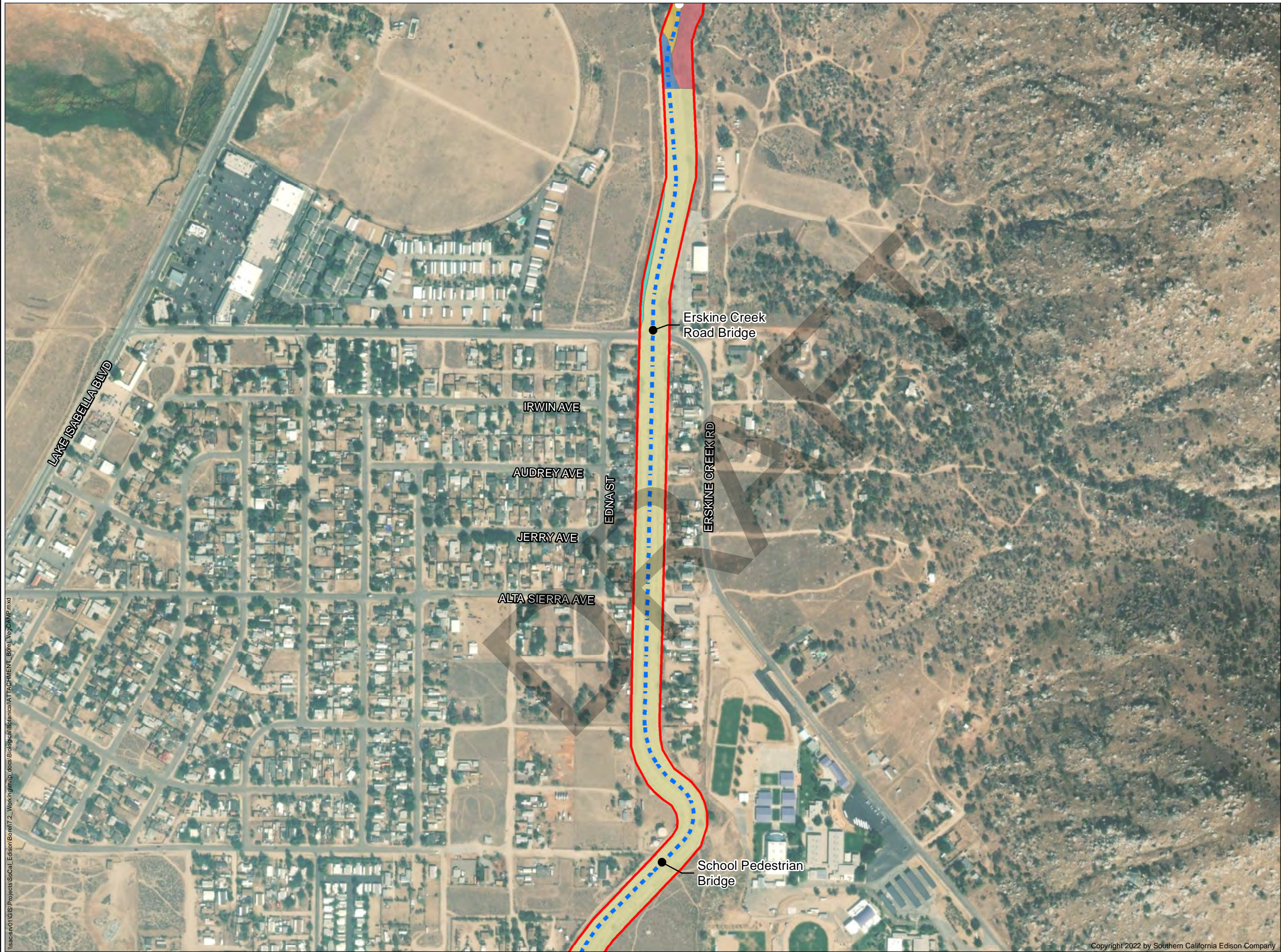


**CDFW VEGCAMP ALLIANCES**

BOREL HYDROELECTRIC LICENSE SURRENDER PROJECT  
PAGE 7 OF 11



Southern California Edison (SCE) has no reason to believe that there are any inaccuracies or defects with information incorporated in this work and make no representations of any kind, including, but not limited to, the warranties of merchantability or fitness for a particular use, nor are any such warranties to be implied, with respect to the information or data, furnished herein. No part of this map may be reproduced or transmitted in any form or by any means, electronic or mechanical, including photocopying and recording system, except as expressly permitted in writing by SCE.



LEGEND

- FERC Project Boundary #382
- Borel Canal
- Project Feature
- Non-Project Feature

VegCAMP Alliance

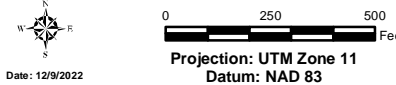
- Built Up & Urban Disturbance Mapping Unit (includes development, mines and borrow pits)
- California Annual and Perennial Grassland Macrogroup
- Ericameria nauseosa*
- Quercus douglasii*
- Quercus wislizeni* (tree) Alliance

\*SOURCE: HDR (2022), SoCal Edison (2021), CDFW (2021), ESRI Aerial Imagery.



CDFW VEGCAMP ALLIANCES

BOREL HYDROELECTRIC LICENSE SURRENDER PROJECT  
PAGE 8 OF 11



Date: 12/9/2022  
Projection: UTM Zone 11  
Datum: NAD 83  
Southern California Edison (SCE) has no reason to believe that there are any inaccuracies or defects with information incorporated in this work and make no representations of any kind, including, but not limited to, the warranties of merchantability or fitness for a particular use, nor are any such warranties to be implied, with respect to the information or data, furnished herein. No part of this map may be reproduced or transmitted in any form or by any means, electronic or mechanical, including photocopying and recording system, except as expressly permitted in writing by SCE.



**LEGEND**

FERC Project Boundary #382

Borel Canal

Project Feature

Non-Project Feature

CDFW Sensitive Natural Communities

Sampling Point

**VegCAMP Alliance**

Agriculture Mapping Unit  
(Without fallow annual grasses dominating)

Built Up & Urban Disturbance Mapping Unit (includes development, mines and borrow pits)

California Annual and Perennial Grassland Macrogroup

*Ericameria nauseosa*

*Eriogonum wrightii*


*Lepidospartum squamatum* Alliance

*Lotus scoparius* - *Lupinus albifrons* - *Eriodictyon* spp. Alliance

*Quercus douglasii*

\*SOURCE: HDR (2022), SoCal Edison (2021), CDFW (2021), ESRI Aerial Imagery.






**SOUTHERN CALIFORNIA  
EDISON®**  
An EDISON INTERNATIONAL® Company

**CDFW VEGCAMP ALLIANCES**

BOREL HYDROELECTRIC LICENSE SURRENDER PROJECT  
PAGE 9 OF 11

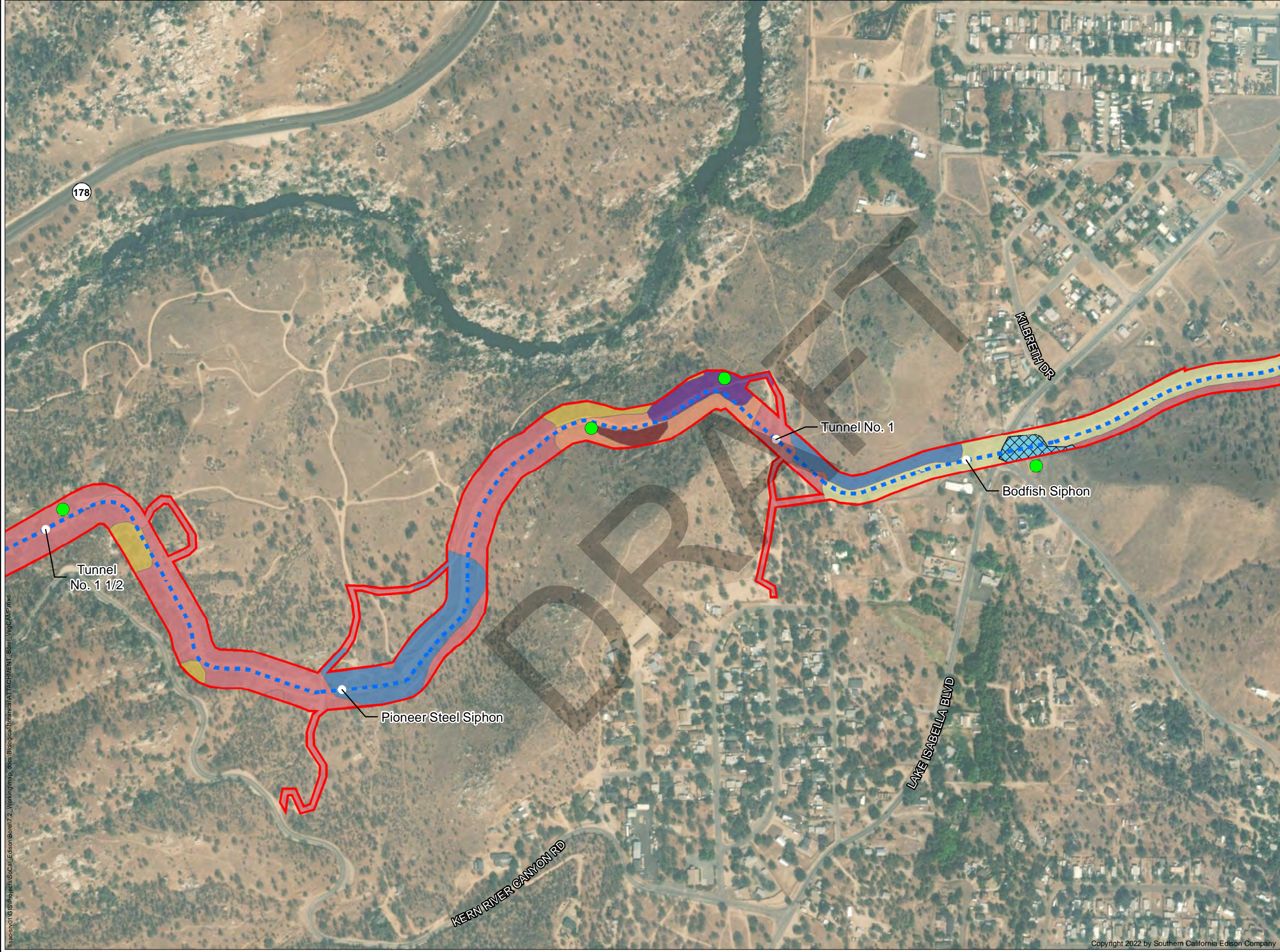


0250500  
Feet

Projection: UTM Zone 11  
Datum: NAD 83

Southern California Edison (SCE) has no reason to believe that there are any inaccuracies or defects with information incorporated in this work and make no representations of any kind, including, but not limited to, the warranties of merchantability or fitness for a particular use, nor are any such warranties to be implied, with respect to the information or data, furnished herein. No part of this map may be reproduced or transmitted in any form or by any means, electronic or mechanical, including photocopying and recording system, except as expressly permitted in writing by SCE.

\\sac-srv01\GIS\Projects\SoCal\_Edison\Borel\7\_2\_Working\map\_docs\Biological\Borel\Attachment\_Borel\_VegCAMP.mxd



LEGEND

- FERC Project Boundary #382
- Borel Canal
- Project Feature
- CDFW Sensitive Natural Communities
- Sampling Point
- VegCAMP Alliance**
  - Built Up & Urban Disturbance Mapping Unit (includes development, mines and borrow pits)
  - California Annual and Perennial Grassland Macrogroup
  - Ceanothus leucodermis* Alliance
  - Eriogonum wrightii*
  - Lotus scoparius* - *Lupinus albifrons* - *Eriodictyon* spp. Alliance
  - Pinus sabiniana*
  - Quercus douglasii*
  - Quercus wislizeni* (tree) Alliance

\*SOURCE: HDR (2022), SoCal Edison (2021), CDFW (2021), ESRI Aerial Imagery.



CDFW VEGCAMP ALLIANCES

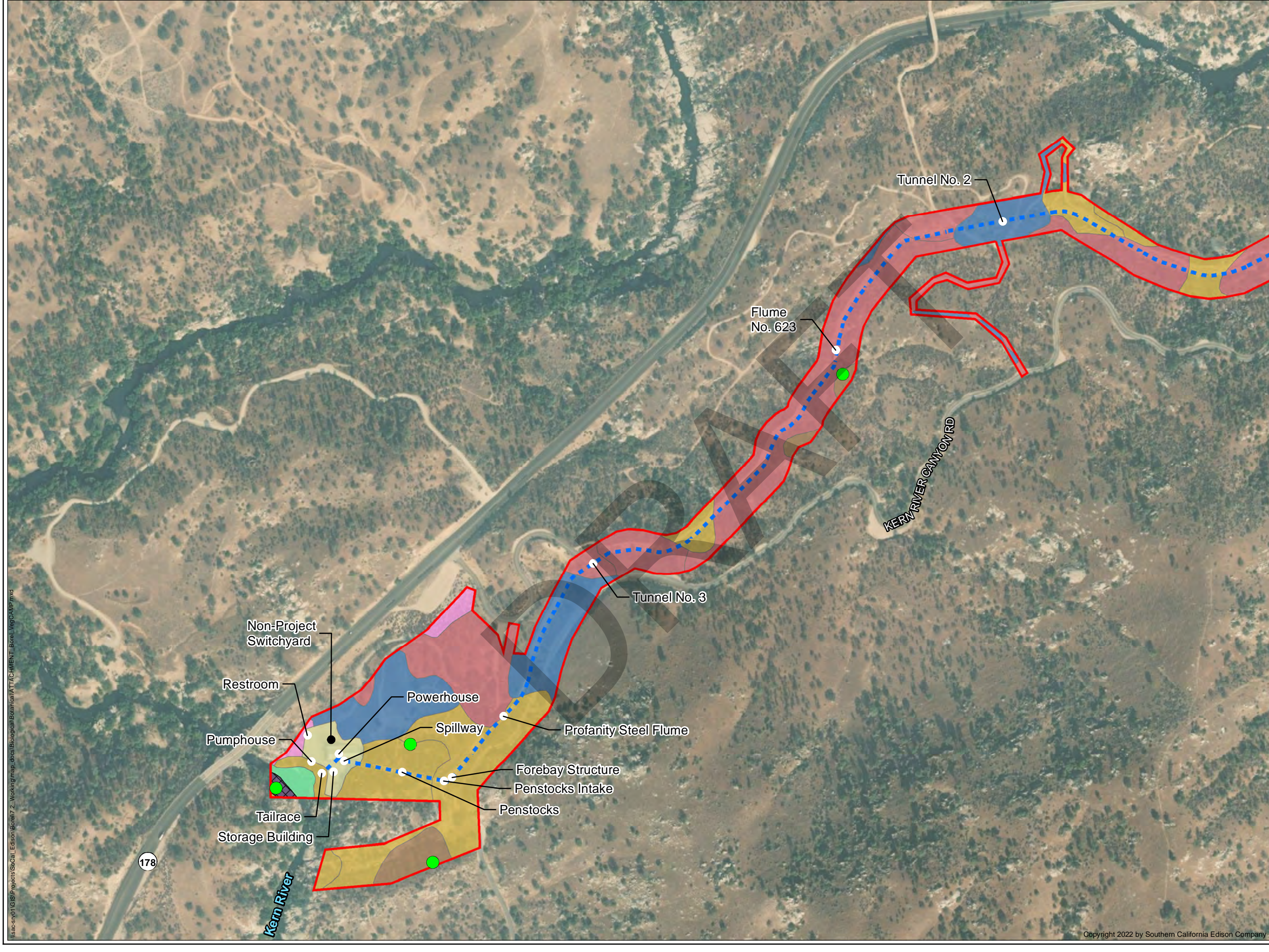
BOREL HYDROELECTRIC LICENSE SURRENDER PROJECT  
PAGE 10 OF 11



0 250 500 Feet

Projection: UTM Zone 11  
Datum: NAD 83

Southern California Edison (SCE) has no reason to believe that there are any inaccuracies or defects with information incorporated in this work and make no representations of any kind, including, but not limited to, the warranties of merchantability or fitness for a particular use, nor are any such warranties to be implied, with respect to the information or data, furnished herein. No part of this map may be reproduced or transmitted in any form or by any means, electronic or mechanical, including photocopying and recording system, except as expressly permitted in writing by SCE.



**LEGEND**

FERC Project Boundary #382

Borel Canal

Project Feature

Non-Project Feature

CDFW Sensitive Natural Communities

Sampling Point

**VegCAMP Alliance**

Built Up & Urban Disturbance Mapping Unit (includes development, mines and borrow pits)

California Annual and Perennial Grassland Macrogroup

*Ceanothus cuneatus*

*Eriogonum fasciculatum* Alliance

Perennial Stream Channel Mapping Unit

*Platanus racemosa* - *Quercus* spp. Alliance

*Quercus douglasii*

*Quercus wislizeni* (tree) Alliance

\*SOURCE: HDR (2022), SoCal Edison (2021), CDFW (2021), ESRI Aerial Imagery.

SOUTHERN CALIFORNIA  
**EDISON**  
An EDISON INTERNATIONAL Company

**CDFW VEGCAMP ALLIANCES**

BOREL HYDROELECTRIC LICENSE SURRENDER PROJECT  
PAGE 11 OF 11

Date: 12/9/2022

0250500

Feet

Projection: UTM Zone 11  
Datum: NAD 83

Southern California Edison (SCE) has no reason to believe that there are any inaccuracies or defects with information incorporated in this work and make no representations of any kind, including, but not limited to, the warranties of merchantability or fitness for a particular use, nor are any such warranties to be implied, with respect to the information or data, furnished herein. No part of this map may be reproduced or transmitted in any form or by any means, electronic or mechanical, including photocopying and recording system, except as expressly permitted in writing by SCE.

\\sac-sv01\GIS\Projects\SoCal Edison\Borel\2\_Working\map\_docs\Biological\Botanical\ATTACHMENT\_Borel\_VegCAMP.mxd

Copyright 2022 by Southern California Edison Company