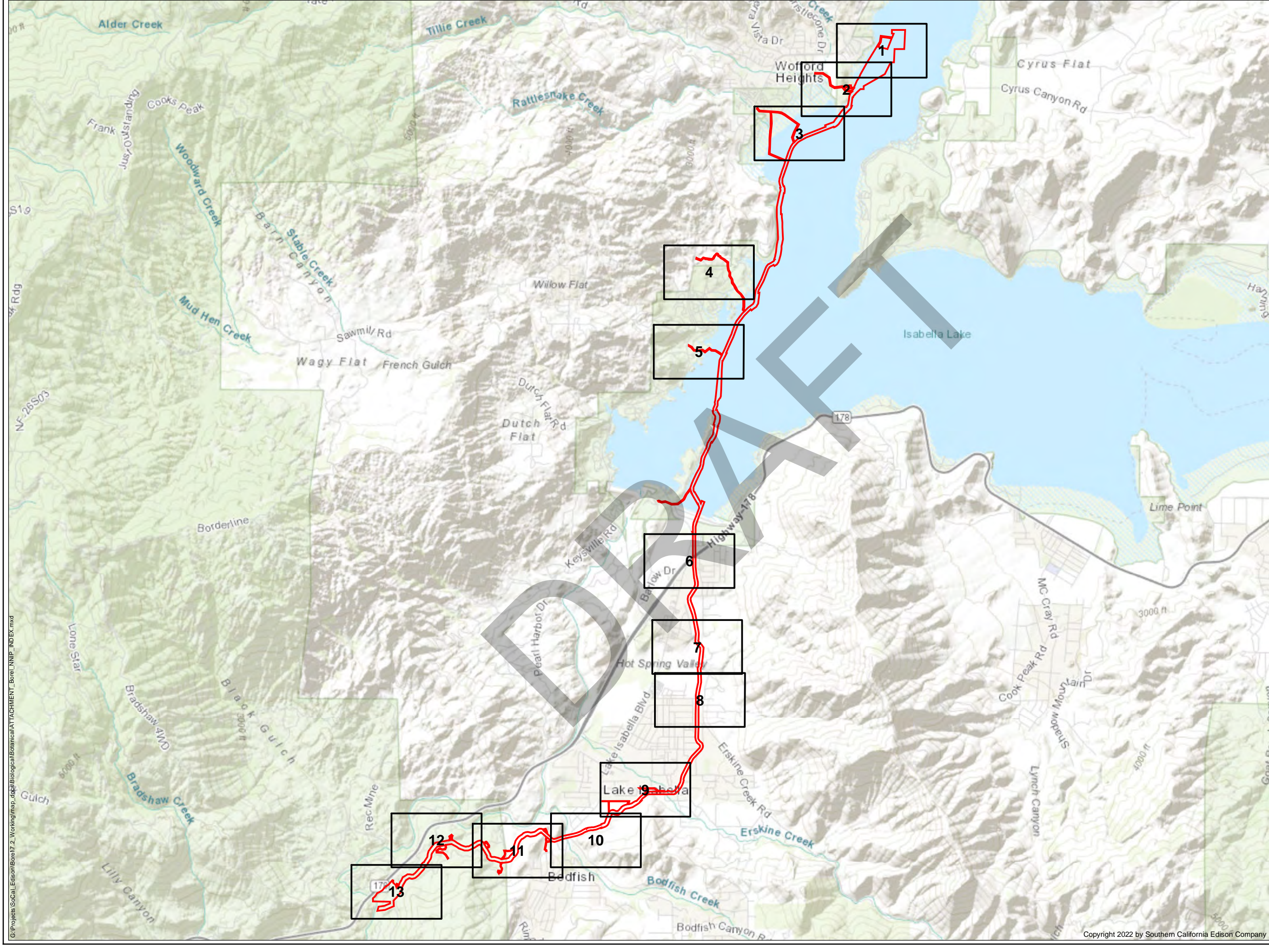


## **Attachment C: Non-native Invasive Plants**

DRAFT

PAGE INTENTIONALLY LEFT BLANK





**LEGEND**  

FERC Project Boundary #382

Map Page Extent

\*SOURCE: HDR (2021), SoCal Edison (2021), ESRI Topo (2021).

**SOUTHERN CALIFORNIA EDISON**  
An EDISON INTERNATIONAL® Company

**NON-NATIVE INVASIVE PLANTS OVERVIEW**  
BOREL HYDROELECTRIC LICENSE SURRENDER PROJECT

00.51 Miles

Projection: StatePlane California V FIPS 0405 Feet  
Datum: NAD 83

Southern California Edison (SCE) has no reason to believe that there are any inaccuracies or defects with information incorporated in this work and make no representations of any kind, including, but not limited to, the warranties of merchantability or fitness for a particular use, nor are any such warranties to be implied, with respect to the information or data, furnished herein. No part of this map may be reproduced or transmitted in any form or by any means, electronic or mechanical, including photocopying and recording system, except as expressly permitted in writing by SCE.

Copyright 2022 by Southern California Edison Company





\\scc-srv01\GIS\Projects\SoCal\_Edison\Borel\7\_2\_Working\map\_docs\Biological\Botanical\ATTACHMENT\_Borel\_NNIP.mxd

### LEGEND

FERC Project Boundary #382

Project Feature

**Non-Native Invasive Plants**

cheat grass (*Bromus tectorum*)

\*SOURCE: HDR (2021), SoCal Edison (2021), ESRI Aerial (2021).

SOUTHERN CALIFORNIA

**EDISON**

An EDISON INTERNATIONAL Company

**NON-NATIVE  
INVASIVE PLANTS**

BOREL HYDROELECTRIC LICENSE SURRENDER PROJECT  
PAGE 1 OF 12

Date: 12/9/2022

0200400

Feet

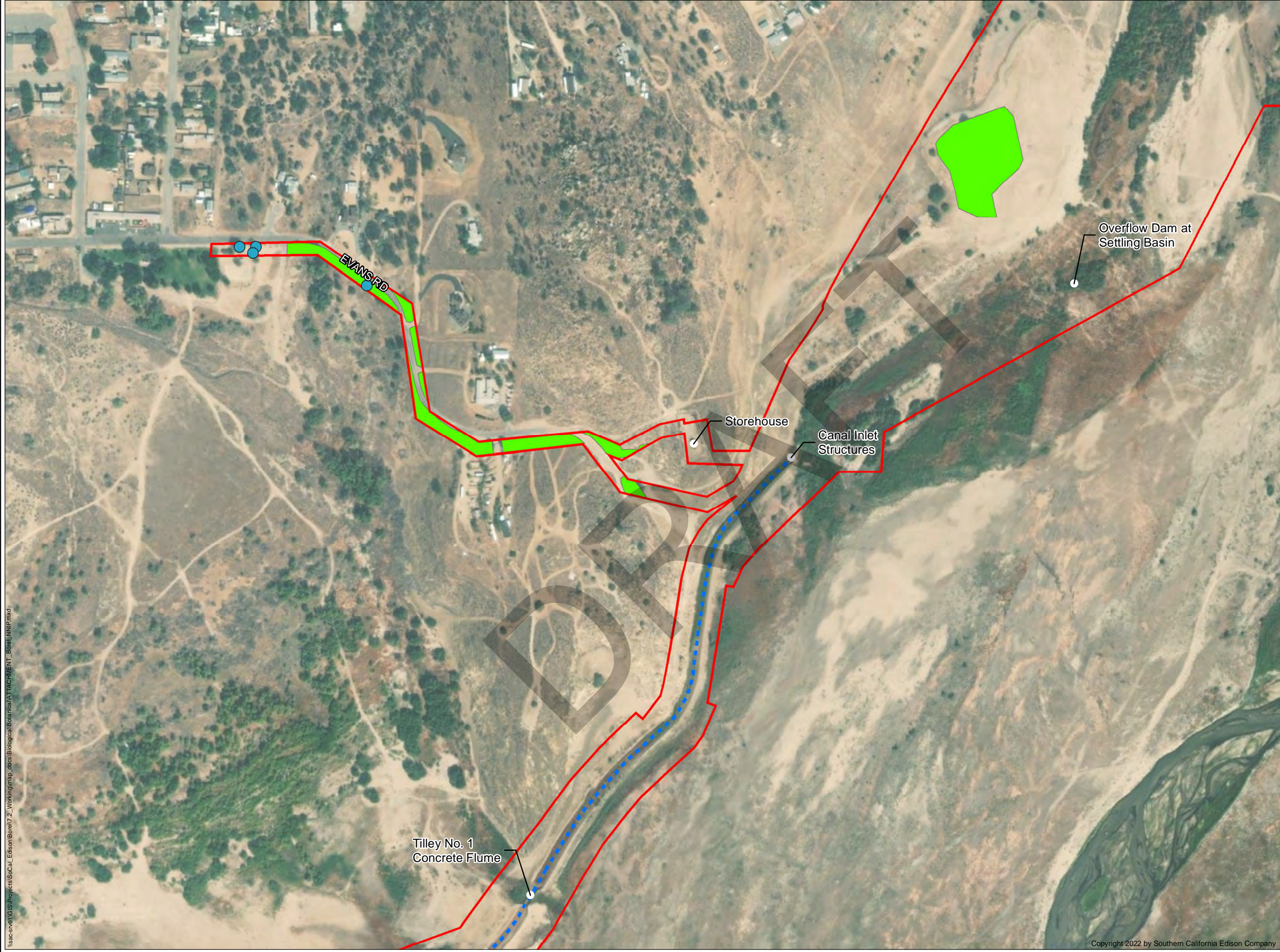
Projection: UTM Zone 11

Datum: NAD 83

Southern California Edison (SCE) has no reason to believe that there are any inaccuracies or defects with information incorporated in this work and make no representations of any kind, including, but not limited to, the warranties of merchantability or fitness for a particular use, nor are any such warranties to be implied, with respect to the information or data, furnished herein. No part of this map may be reproduced or transmitted in any form or by any means, electronic or mechanical, including photocopying and recording system, except as expressly permitted in writing by SCE.

Copyright 2022 by Southern California Edison Company





**LEGEND**

FERC Project Boundary #382

Borel Canal

Project Feature

**Non-Native Invasive Plants**

Black locust (*Robinia pseudoacacia*)

cheat grass (*Bromus tectorum*)

\*SOURCE: HDR (2021), SoCal Edison (2021), ESRI Aerial (2021).

**SOUTHERN CALIFORNIA  
EDISON®**

An EDISON INTERNATIONAL® Company

**NON-NATIVE  
INVASIVE PLANTS**

BOREL HYDROELECTRIC LICENSE SURRENDER PROJECT  
PAGE 2 OF 12

N

E

S

W

0

200

400

Feet

Projection: UTM Zone 11

Datum: NAD 83

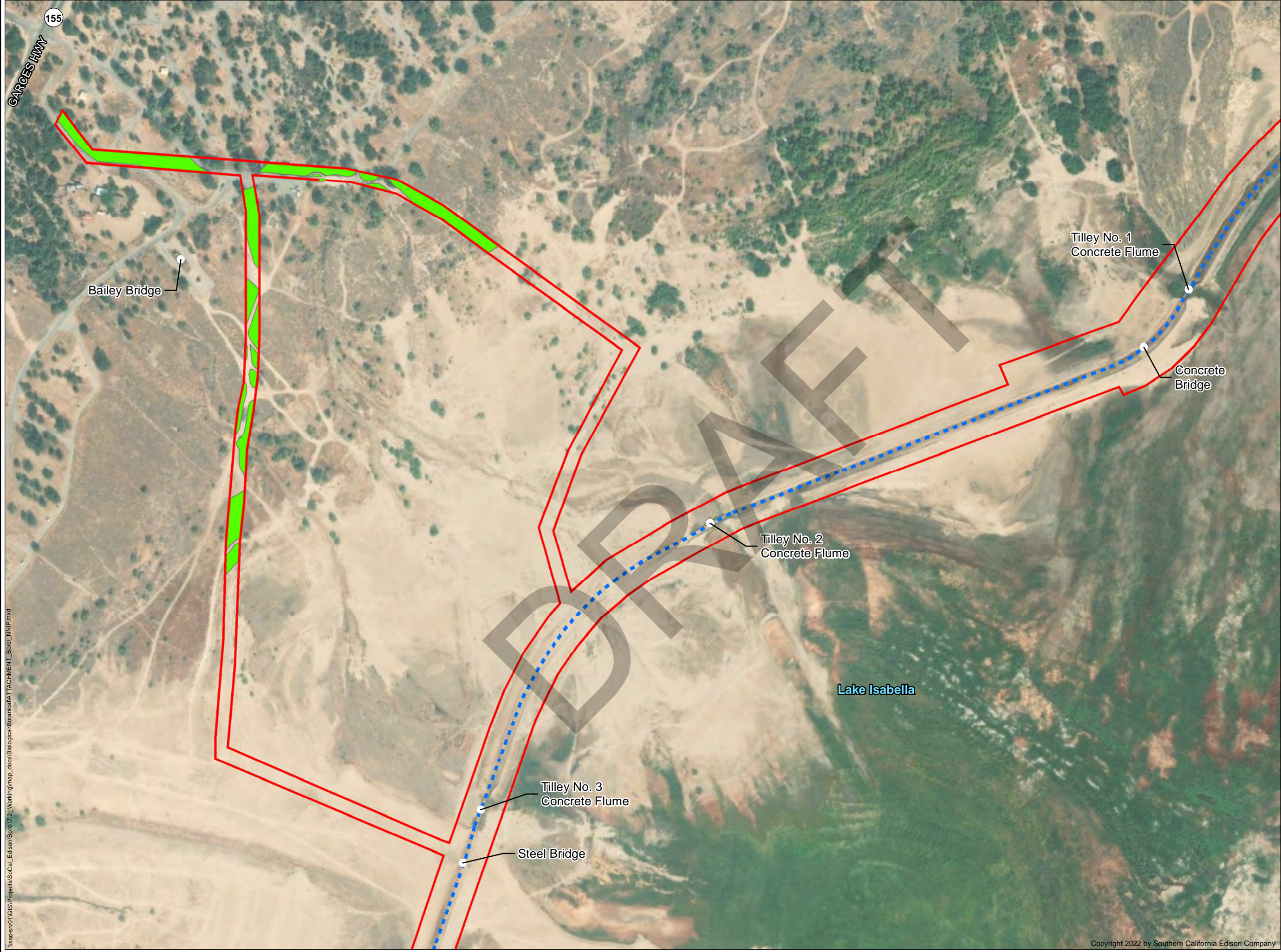
Date: 12/9/2022

Southern California Edison (SCE) has no reason to believe that there are any inaccuracies or defects with information incorporated in this work and make no representations of any kind, including, but not limited to, the warranties of merchantability or fitness for a particular use, nor are any such warranties to be implied, with respect to the information or data, furnished herein. No part of this map may be reproduced or transmitted in any form or by any means, electronic or mechanical, including photocopying and recording system, except as expressly permitted in writing by SCE.

\\sac-srv01\GIS\Projects\SoCal\_Edison\Borel\7\_2\_Working\map\_docs\Biological\Botanical\ATTACHMENT\_Borel\_NNIP.mxd

Copyright 2022 by Southern California Edison Company





**LEGEND**

FERC Project Boundary #382

Borel Canal

Project Feature

**Non-Native Invasive Plants**

cheat grass (*Bromus tectorum*)

cheat grass (*Bromus tectorum*)

\*SOURCE: HDR (2021), SoCal Edison (2021), ESRI Aerial (2021).

**SOUTHERN CALIFORNIA  
EDISON®**  
An EDISON INTERNATIONAL® Company

**NON-NATIVE  
INVASIVE PLANTS**

BOREL HYDROELECTRIC LICENSE SURRENDER PROJECT  
PAGE 3 OF 12

Date: 12/9/2022

0200400

Feet

**Projection: UTM Zone 11  
Datum: NAD 83**

Southern California Edison (SCE) has no reason to believe that there are any inaccuracies or defects with information incorporated in this work and make no representations of any kind, including, but not limited to, the warranties of merchantability or fitness for a particular use, nor are any such warranties to be implied, with respect to the information or data, furnished herein. No part of this map may be reproduced or transmitted in any form or by any means, electronic or mechanical, including photocopying and recording system, except as expressly permitted in writing by SCE.

\\sac-srv01\GIS\Projects\SoCal Edison\Borel\72\_Working\map\_docs\Biological\Botanical\ATTACHMENT\_Borel\_NNIP.mxd

Copyright 2022 by Southern California Edison Company





LEGEND

FERC Project Boundary #382

- - - Borel Canal

Non-Native Invasive Plants

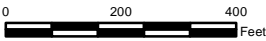
cheat grass (*Bromus tectorum*)

\*SOURCE: HDR (2021), SoCal Edison (2021), ESRI Aerial (2021).



NON-NATIVE INVASIVE PLANTS

BOREL HYDROELECTRIC LICENSE SURRENDER PROJECT  
PAGE 4 OF 12



Date: 12/9/2022

Projection: UTM Zone 11  
Datum: NAD 83

Southern California Edison (SCE) has no reason to believe that there are any inaccuracies or defects with information incorporated in this work and make no representations of any kind, including, but not limited to, the warranties of merchantability or fitness for a particular use, nor are any such warranties to be implied, with respect to the information or data, furnished herein. No part of this map may be reproduced or transmitted in any form or by any means, electronic or mechanical, including photocopying and recording system, except as expressly permitted in writing by SCE.

\\sac-sv01\GIS\Projects\SoCal Edison\Borel72\_Working\map\_docs\Biological\Botanical\ATTACHMENT\_Borel\_NNIP.mxd






### LEGEND


- FERC Project Boundary #382
- Borel Canal
- Project Feature

#### Non-Native Invasive Plants

- cheat grass (*Bromus tectorum*)

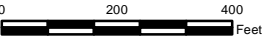

\*SOURCE: HDR (2021), SoCal Edison (2021), ESRI Aerial (2021).





**NON-NATIVE  
INVASIVE PLANTS**

BOREL HYDROELECTRIC LICENSE SURRENDER PROJECT  
PAGE 5 OF 12



Projection: UTM Zone 11  
Datum: NAD 83

Southern California Edison (SCE) has no reason to believe that there are any inaccuracies or defects with information incorporated in this work and make no representations of any kind, including, but not limited to, the warranties of merchantability or fitness for a particular use, nor are any such warranties to be implied, with respect to the information or data, furnished herein. No part of this map may be reproduced or transmitted in any form or by any means, electronic or mechanical, including photocopying and recording system, except as expressly permitted in writing by SCE.

\\sac-sv01\GIS\Projects\SoCal Edison\Borel\7.2\_Working\map\_docs\Biological\Botanical\ATTACHMENT\_Borel\_NNIP.mxd

Copyright 2022 by Southern California Edison Company





LEGEND

FERC Project Boundary #382

Borel Canal


Project Feature

Non-Native Invasive Plants

cheat grass (*Bromus tectorum*)

\*SOURCE: HDR (2021), SoCal Edison (2021), ESRI Aerial (2021).





SOUTHERN CALIFORNIA  
EDISON®  
An EDISON INTERNATIONAL® Company

NON-NATIVE  
INVASIVE PLANTS

BOREL HYDROELECTRIC LICENSE SURRENDER PROJECT  
PAGE 6 OF 12

N

E

S

W

0200400  
Feet

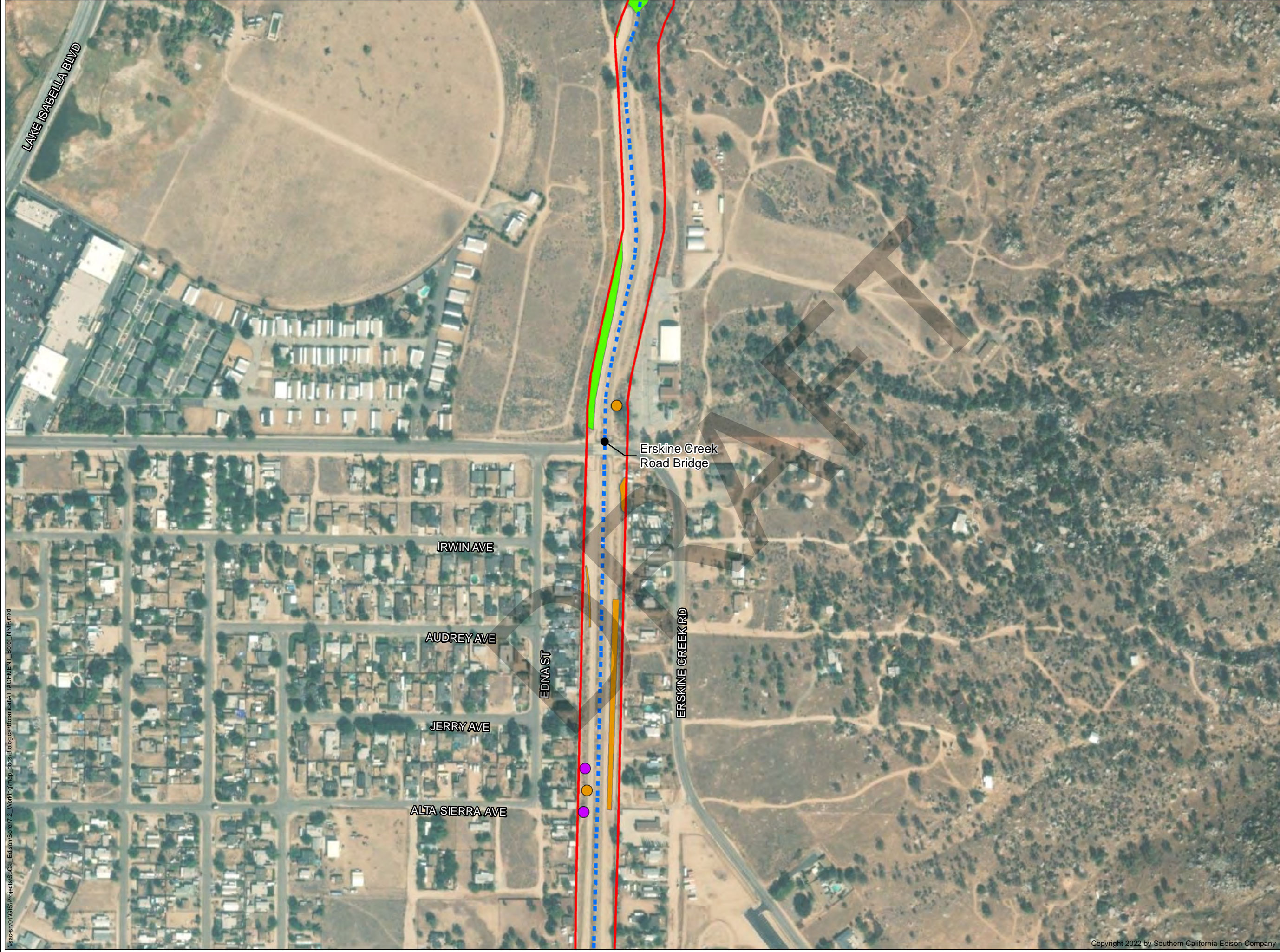
Projection: UTM Zone 11  
Datum: NAD 83

Date: 12/9/2022

Southern California Edison (SCE) has no reason to believe that there are any inaccuracies or defects with information incorporated in this work and make no representations of any kind, including, but not limited to, the warranties of merchantability or fitness for a particular use, nor are any such warranties to be implied, with respect to the information or data, furnished herein. No part of this map may be reproduced or transmitted in any form or by any means, electronic or mechanical, including photocopying and recording system, except as expressly permitted in writing by SCE.

\\sac-srv01\GIS\Projects\SoCal Edison\Borel\7.2\_Working\map\_docs\Biological\Borel\Attachment\_Borel\_NNIP.mxd





\\sac-srv01\GIS\Projects\SoCal Edison\Borel7.2\_Working\map\_docs\Biological\Borel\ATTACHMENT\_Borel\_NNIP.mxd

### LEGEND

FERC Project Boundary #382

Borel Canal

Non-Project Feature

#### Non-Native Invasive Plants

White horehound (*Marrubium vulgare*)

tree of heaven (*Ailanthus altissima*)

cheat grass (*Bromus tectorum*)

tree of heaven (*Ailanthus altissima*)

\*SOURCE: HDR (2021), SoCal Edison (2021), ESRI Aerial (2021).

SOUTHERN CALIFORNIA

EDISON®

An EDISON INTERNATIONAL® Company

NON-NATIVE  
INVASIVE PLANTS

BOREL HYDROELECTRIC LICENSE SURRENDER PROJECT  
PAGE 7 OF 12

N

W

E

S

0

200

400

Feet

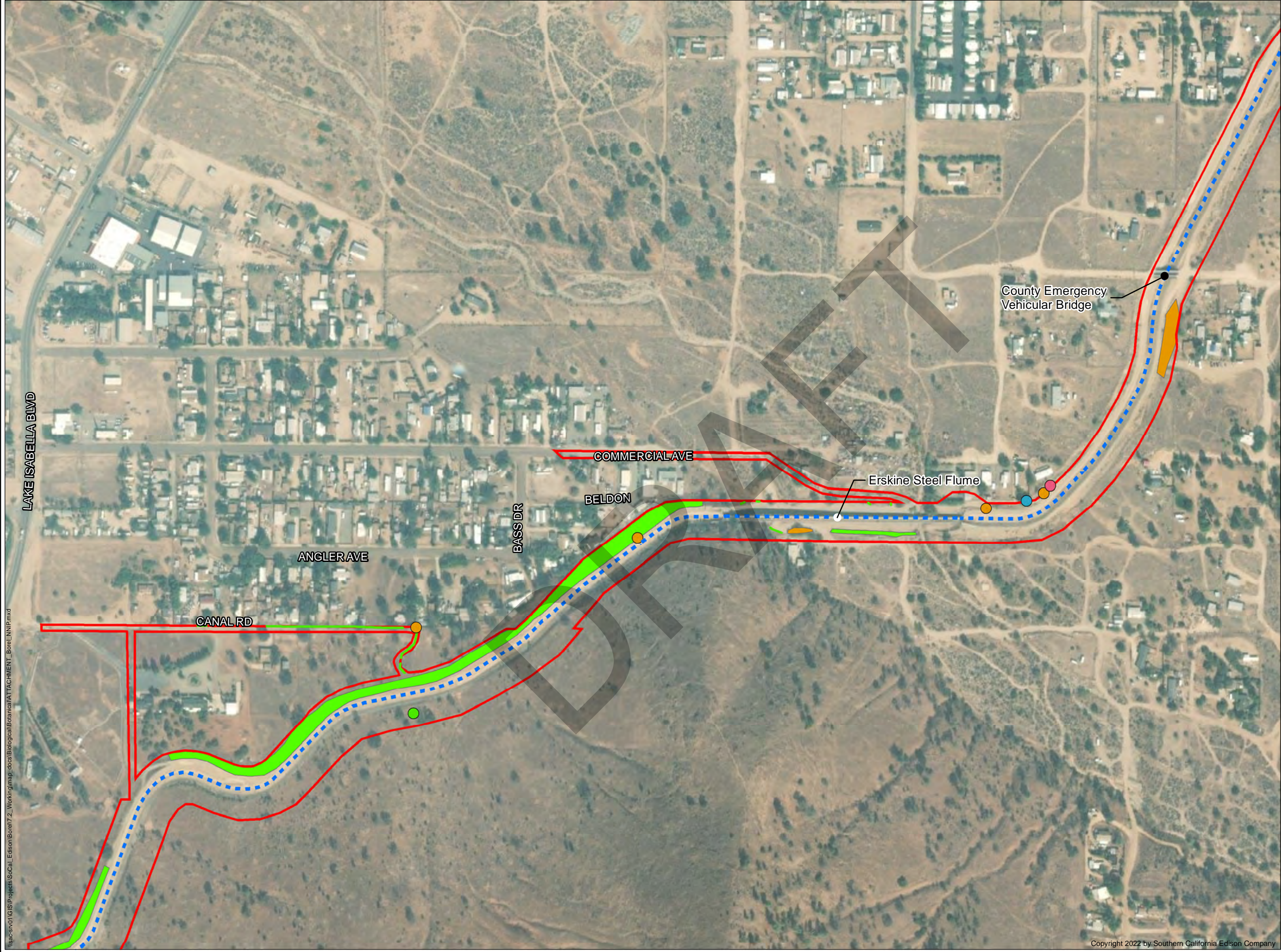
Date: 12/9/2022

Projection: UTM Zone 11  
Datum: NAD 83

Southern California Edison (SCE) has no reason to believe that there are any inaccuracies or defects with information incorporated in this work and make no representations of any kind, including, but not limited to, the warranties of merchantability or fitness for a particular use, nor are any such warranties to be implied, with respect to the information or data, furnished herein. No part of this map may be reproduced or transmitted in any form or by any means, electronic or mechanical, including photocopying and recording system, except as expressly permitted in writing by SCE.

Copyright 2022 by Southern California Edison Company





**LEGEND**

FERC Project Boundary #382

Borel Canal

Project Feature

Non-Project Feature

**Non-Native Invasive Plants**

Black locust (*Robinia pseudoacacia*)

cheat grass (*Bromus tectorum*)

giant reed (*Arundo donax*)

tree of heaven (*Ailanthus altissima*)

cheat grass (*Bromus tectorum*)

cheat grass (*Bromus tectorum*)

tree of heaven (*Ailanthus altissima*)

\*SOURCE: HDR (2021), SoCal Edison (2021), ESRI Aerial (2021).

**SOUTHERN CALIFORNIA  
EDISON**  
An EDISON INTERNATIONAL Company

**NON-NATIVE  
INVASIVE PLANTS**

BOREL HYDROELECTRIC LICENSE SURRENDER PROJECT

PAGE 8 OF 12

Date: 12/9/2022

0200400

Feet

Projection: UTM Zone 11

Datum: NAD 83

Southern California Edison (SCE) has no reason to believe that there are any inaccuracies or defects with information incorporated in this work and make no representations of any kind, including, but not limited to, the warranties of merchantability or fitness for a particular use, nor are any such warranties to be implied, with respect to the information or data, furnished herein. No part of this map may be reproduced or transmitted in any form or by any means, electronic or mechanical, including photocopying and recording system, except as expressly permitted in writing by SCE.

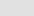
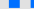
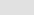
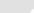
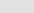


\\sac-srv01\GIS\Projects\SoCal\_Edison\Borel\7\_2\_Working\map\_docs\Biological\Botanical\ATTACHMENT\_Borel\_NNIP.mxd

Copyright 2022 by Southern California Edison Company





## LEGEND

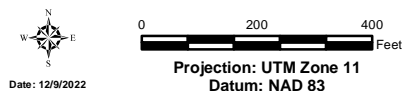
-  FERC Project Boundary #382
  -  Borel Canal
  -  Project Feature
- Non-Native Invasive Plants**
-  White horehound (*Marrubium vulgare*)
  -  cheat grass (*Bromus tectorum*)
  -  tree of heaven (*Ailanthus altissima*)
  -  cheat grass (*Bromus tectorum*)

\*SOURCE: HDR (2021), SoCal Edison (2021)  
ESRI Aerial (2021).



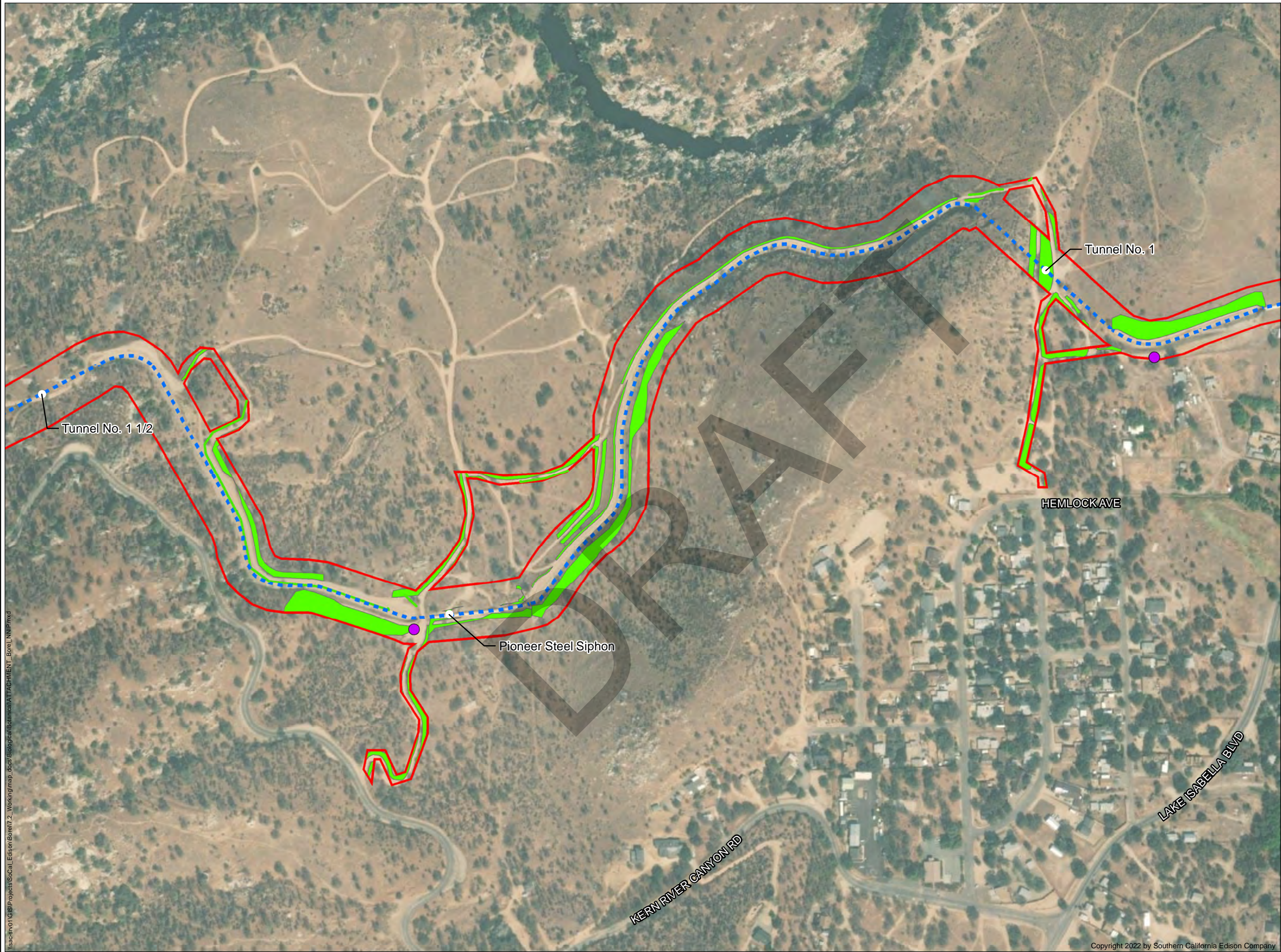
## NON-NATIVE INVASIVE PLANTS

BOREL HYDROELECTRIC LICENSE SURRENDER PROJECT  
PAGE 9 OF 12



Southern California Edison (SCE) has no reason to believe that there are any inaccuracies or defects with information incorporated in this work and make no representations of any kind, including, but not limited to, the warranties of merchantability or fitness for a particular use, nor are any such warranties to be implied, with respect to the information or data, furnished herein. No part of this map may be reproduced or transmitted in any form or by any means, electronic or mechanical, including photocopying and recording system, except as expressly permitted in writing by SCE.





## LEGEND

FERC Project Boundary #382

--- Borel Canal

● Project Feature

### Non-Native Invasive Plants

● White horehound (*Marrubium vulgare*)

--- cheat grass (*Bromus tectorum*)

--- cheat grass (*Bromus tectorum*)

\*SOURCE: HDR (2021), SoCal Edison (2021), ESRI Aerial (2021).



## NON-NATIVE INVASIVE PLANTS

BOREL HYDROELECTRIC LICENSE SURRENDER PROJECT  
PAGE 10 OF 12



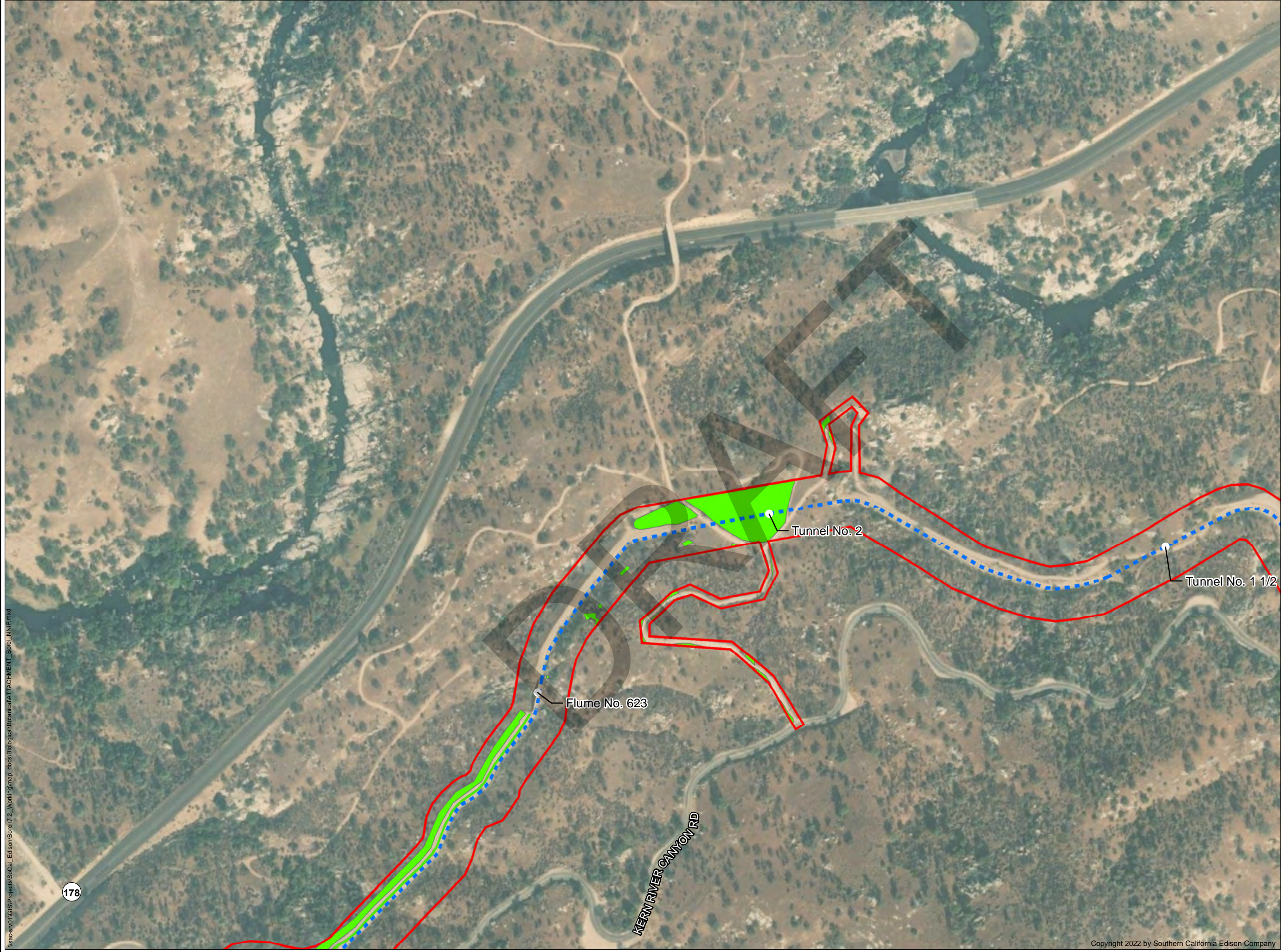
Date: 12/9/2022

0 200 400 Feet

Projection: UTM Zone 11  
Datum: NAD 83

Southern California Edison (SCE) has no reason to believe that there are any inaccuracies or defects with information incorporated in this work and make no representations of any kind, including, but not limited to, the warranties of merchantability or fitness for a particular use, nor are any such warranties to be implied, with respect to the information or data, furnished herein. No part of this map may be reproduced or transmitted in any form or by any means, electronic or mechanical, including photocopying and recording system, except as expressly permitted in writing by SCE.





**LEGEND**

FERC Project Boundary #382

Borel Canal


Project Feature


**Non-Native Invasive Plants**

cheat grass (*Bromus tectorum*)

cheat grass (*Bromus tectorum*)


\*SOURCE: HDR (2021), SoCal Edison (2021), ESRI Aerial (2021).





**NON-NATIVE  
INVASIVE PLANTS**

BOREL HYDROELECTRIC LICENSE SURRENDER PROJECT  
PAGE 11 OF 12



0200400  
Feet

Projection: UTM Zone 11  
Datum: NAD 83

Southern California Edison (SCE) has no reason to believe that there are any inaccuracies or defects with information incorporated in this work and make no representations of any kind, including, but not limited to, the warranties of merchantability or fitness for a particular use, nor are any such warranties to be implied, with respect to the information or data, furnished herein. No part of this map may be reproduced or transmitted in any form or by any means, electronic or mechanical, including photocopying and recording system, except as expressly permitted in writing by SCE.

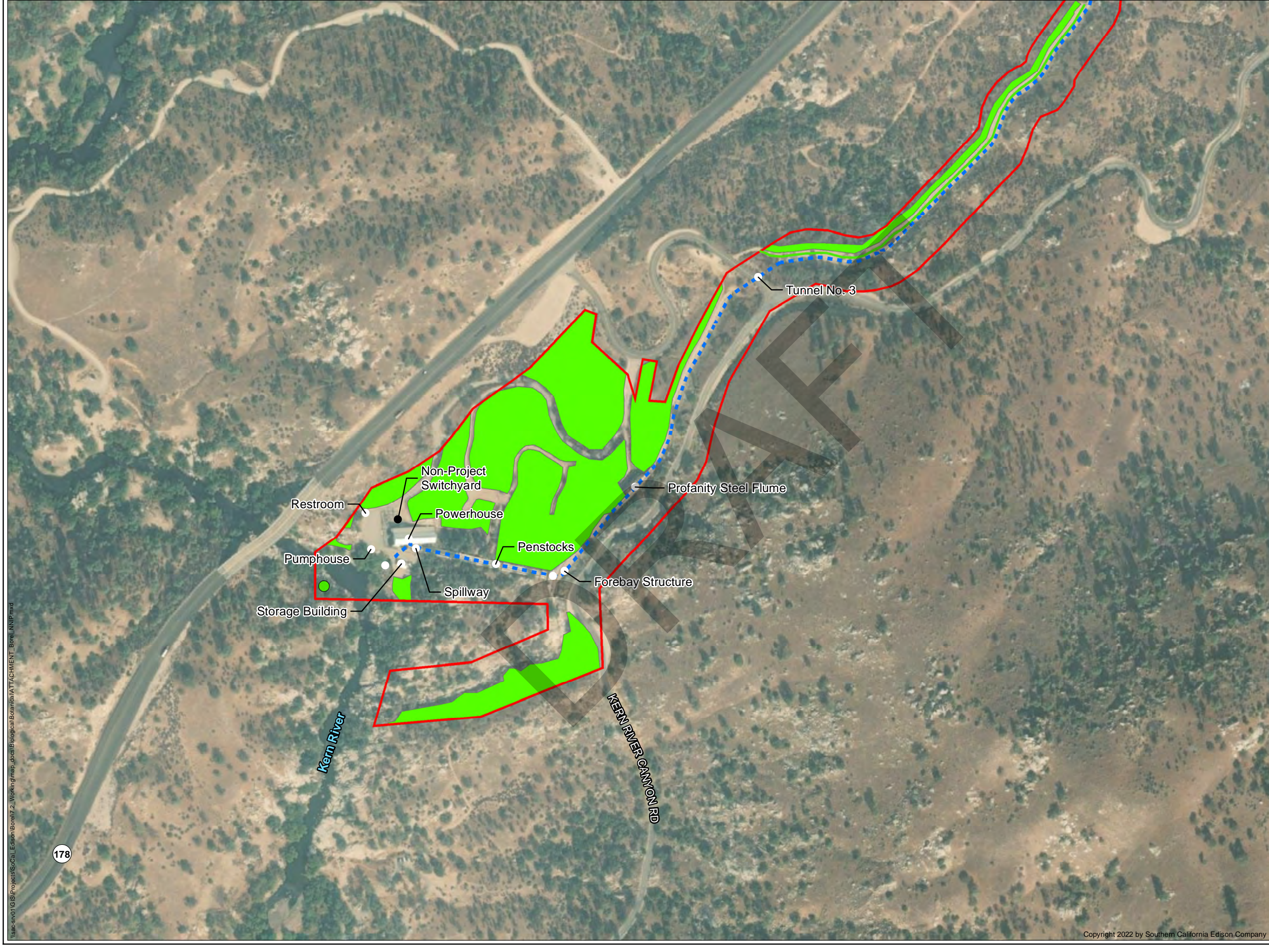
\\sac-sv01\GIS\Projects\SoCal\_Edison\Borel\7.2\_Working\map\_docs\Biological\Botanical\ATTACHMENT\_Borel\_NNIP.mxd

178

KERN RIVER CANYON RD

Copyright 2022 by Southern California Edison Company





### LEGEND

FERC Project Boundary #382

Borel Canal

Project Feature

Non-Project Feature

#### Non-Native Invasive Plants

cheat grass (*Bromus tectorum*)

cheat grass (*Bromus tectorum*)

cheat grass (*Bromus tectorum*)

\*SOURCE: HDR (2021), SoCal Edison (2021), ESRI Aerial (2021).

SOUTHERN CALIFORNIA

EDISON®

An EDISON INTERNATIONAL® Company

NON-NATIVE  
INVASIVE PLANTS

BOREL HYDROELECTRIC LICENSE SURRENDER PROJECT  
PAGE 12 OF 12

N

E

S

W

0200400

Feet

Date: 12/9/2022

Projection: UTM Zone 11  
Datum: NAD 83

Southern California Edison (SCE) has no reason to believe that there are any inaccuracies or defects with information incorporated in this work and make no representations of any kind, including, but not limited to, the warranties of merchantability or fitness for a particular use, nor are any such warranties to be implied, with respect to the information or data, furnished herein. No part of this map may be reproduced or transmitted in any form or by any means, electronic or mechanical, including photocopying and recording system, except as expressly permitted in writing by SCE.

\\sac-srv01\GIS\Projects\SoCal Edison\Borel\7.2\_Working\map\_docs\Biological\Botanical\ATTACHMENT\_Borel\_NNIP.mxd

Copyright 2022 by Southern California Edison Company