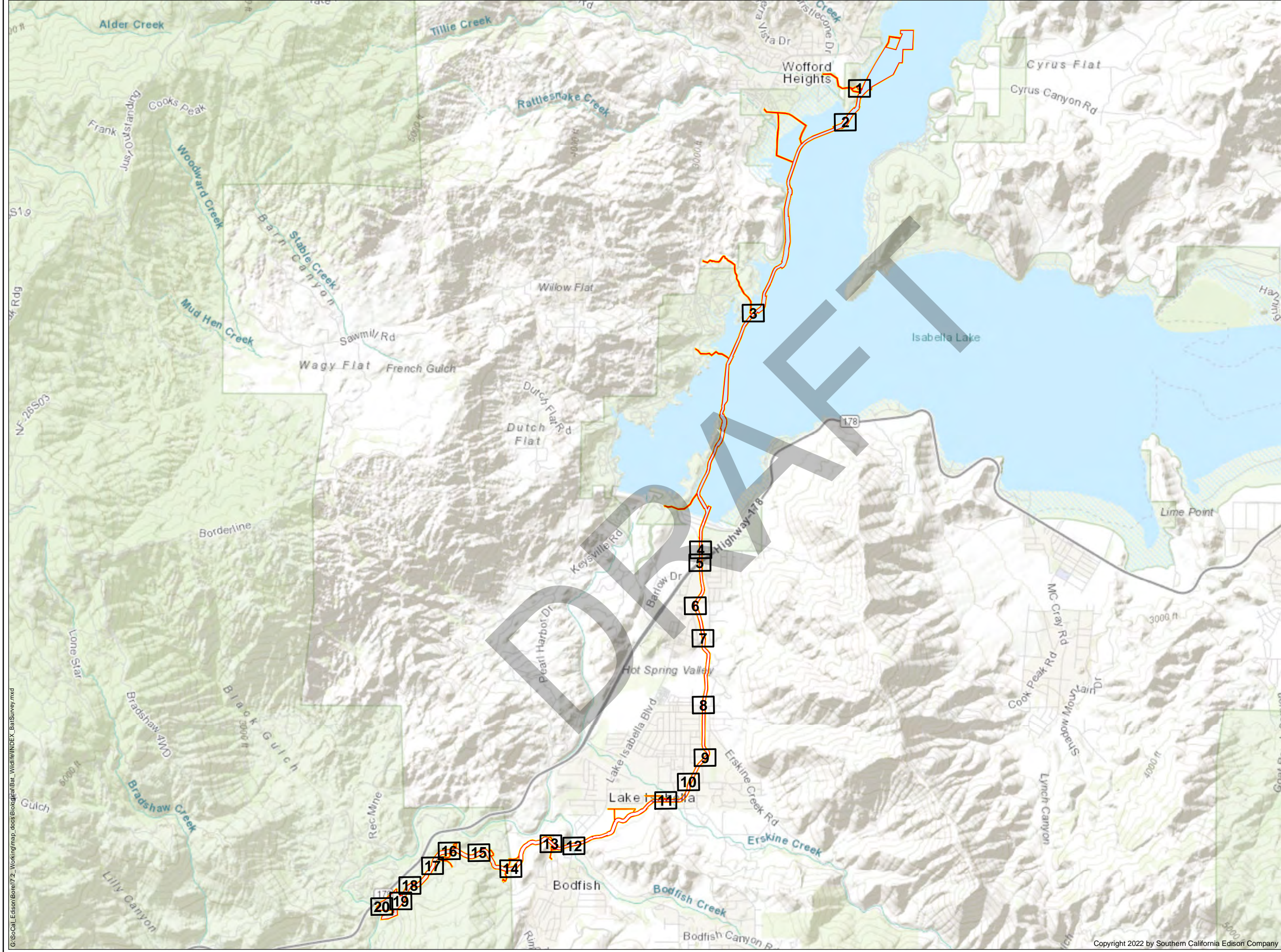


Attachment E: Bat Habitat Suitability

DRAFT

PAGE INTENTIONALLY LEFT BLANK



LEGEND


FERC Project Boundary #382

Survey Area

Map Page Extent

*SOURCE: HDR (2021), ESRI Topo (2021).





SOUTHERN CALIFORNIA
EDISON®
An EDISON INTERNATIONAL® Company

BAT HABITAT SUITABILITY
OVERVIEW

BOREL HYDROELECTRIC LICENSE SURRENDER PROJECT

W

N

E

S

00.51 Miles

Date: 2/4/2022

Projection: StatePlane California V FIPS 0405 Feet
Datum: NAD 83






Southern California Edison (SCE) has no reason to believe that there are any inaccuracies or defects with information incorporated in this work and make no representations of any kind, including, but not limited to, the warranties of merchantability or fitness for a particular use, nor are any such warranties to be implied, with respect to the information or data, furnished herein. No part of this map may be reproduced or transmitted in any form or by any means, electronic or mechanical, including photocopying and recording system, except as expressly permitted in writing by SCE.

G:\SCoCal\Edison\Borel\7.2_Working\map_docs\Biodigital\Bat_Wildlife\INDEX_BatSurvey.mxd

Copyright 2022 by Southern California Edison Company



LEGEND

-  FERC Project Boundary #382
-  Survey Area
-  Borel Canal
- Bat Habitat Suitability**
 -  Possible Bat Roost - No Evidence Present
 -  Non-suitable Bat Roost - No Evidence Present

*SOURCE: HDR (2021), SoCal Edison (2021), ESRI Aerial (2021).



BAT HABITAT SUITABILITY MAP

BOREL HYDROELECTRIC LICENSE SURRENDER PROJECT
PAGE 1 OF 20



Date: 12/9/2022

0 50 100
Feet

Projection: StatePlane California V FIPS 0405 Feet
Datum: NAD 83

Southern California Edison (SCE) has no reason to believe that there are any inaccuracies or defects with information incorporated in this work and make no representations of any kind, including, but not limited to, the warranties of merchantability or fitness for a particular use, nor are any such warranties to be implied, with respect to the information or data, furnished herein. No part of this map may be reproduced or transmitted in any form or by any means, electronic or mechanical, including photocopying and recording system, except as expressly permitted in writing by SCE.



\\sac-srv01\GIS\Projects\SoCal_Edison\Borel\7_2_Working\map_docs\Biological\Bat_Wildlife\MAPBOOK_BatSurvey.mxd

LEGEND

FERC Project Boundary #382

Survey Area

Borel Canal

Bat Habitat Suitability

Possible Bat Roost - No Evidence Present

*SOURCE: HDR (2021), SoCal Edison (2021), ESRI Aerial (2021).

**SOUTHERN CALIFORNIA
EDISON®**
An EDISON INTERNATIONAL® Company

**BAT HABITAT
SUITABILITY MAP**

BOREL HYDROELECTRIC LICENSE SURRENDER PROJECT
PAGE 2 OF 20

050100
Feet

Projection: StatePlane California V FIPS 0405 Feet
Datum: NAD 83

Date: 12/9/2022


Southern California Edison (SCE) has no reason to believe that there are any inaccuracies or defects with information incorporated in this work and make no representations of any kind, including, but not limited to, the warranties of merchantability or fitness for a particular use, nor are any such warranties to be implied, with respect to the information or data, furnished herein. No part of this map may be reproduced or transmitted in any form or by any means, electronic or mechanical, including photocopying and recording system, except as expressly permitted in writing by SCE.


Copyright 2022 by Southern California Edison Company


\\sac-srv01\GIS\Projects\SoCal Edison\Borel\7.2_Working\map_docs\Biological\Bat_Wildlife\MAPBOOK_BatSurvey.mxd




LEGEND

 FERC Project Boundary #382

 Survey Area


 Borel Canal

Bat Habitat Suitability

 Possible Bat Roost - No Evidence Present

*SOURCE: HDR (2021), SoCal Edison (2021), ESRI Aerial (2021).

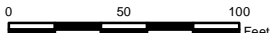





**SOUTHERN CALIFORNIA
EDISON®**
An EDISON INTERNATIONAL® Company

**BAT HABITAT
SUITABILITY MAP**

BOREL HYDROELECTRIC LICENSE SURRENDER PROJECT
PAGE 3 OF 20

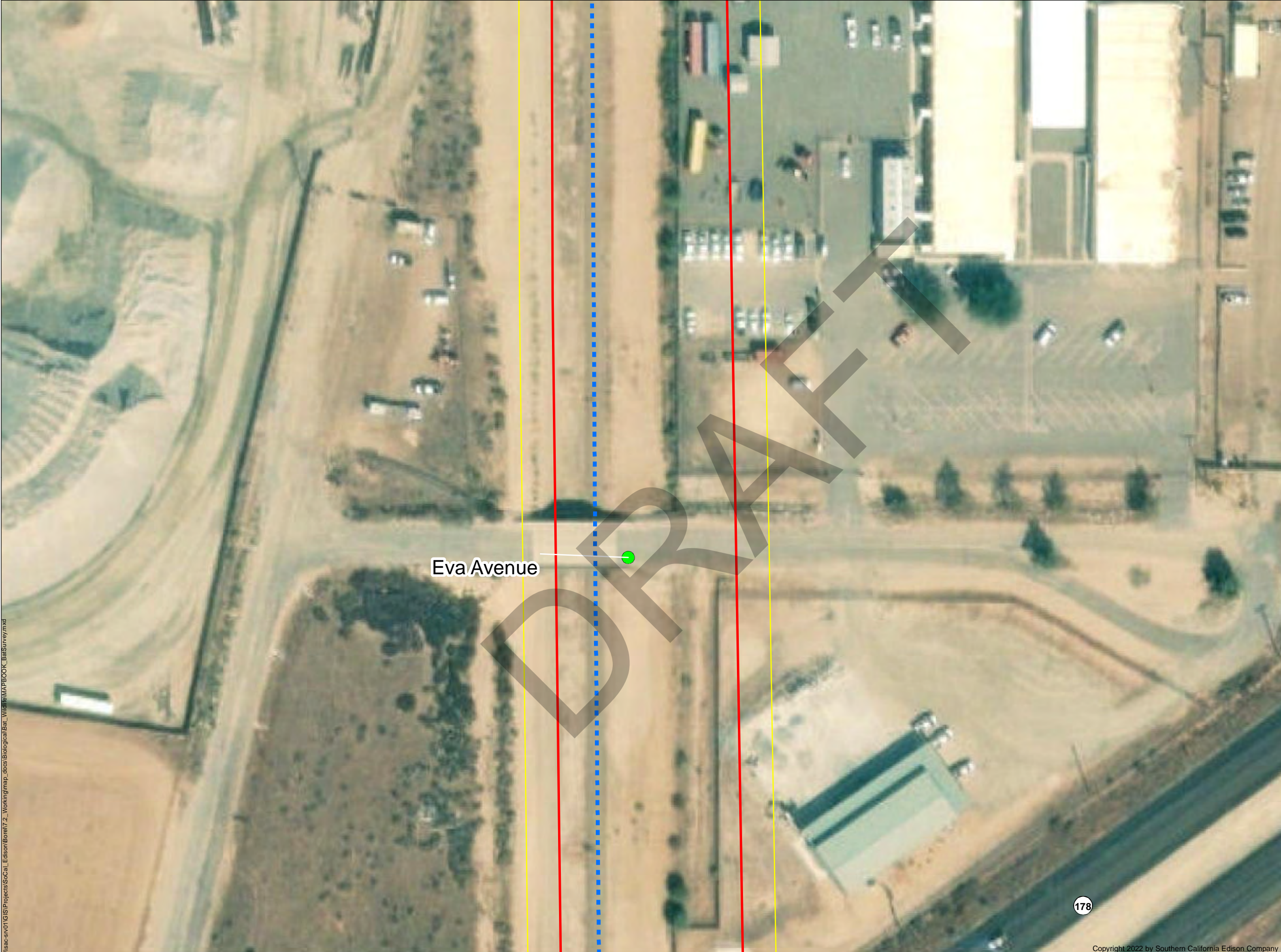


Projection: StatePlane California V FIPS 0405 Feet
Datum: NAD 83

Southern California Edison (SCE) has no reason to believe that there are any inaccuracies or defects with information incorporated in this work and make no representations of any kind, including, but not limited to, the warranties of merchantability or fitness for a particular use, nor are any such warranties to be implied, with respect to the information or data, furnished herein. No part of this map may be reproduced or transmitted in any form or by any means, electronic or mechanical, including photocopying and recording system, except as expressly permitted in writing by SCE.

Copyright 2022 by Southern California Edison Company

\\sac-srv01\GIS\Projects\SoCal Edison\Borel\7_2_Working\map_docs\Biological\Bat_Wildlife\MAPBOOK_BatSurvey.mxd



LEGEND

FERC Project Boundary
#382

Survey Area

Borel Canal

Bat Habitat Suitability

Evidence of Roosting Bats
Present

*SOURCE: HDR (2021), SoCal Edison (2021), ESRI Aerial (2021).

**SOUTHERN CALIFORNIA
EDISON®**
An EDISON INTERNATIONAL® Company

**BAT HABITAT
SUITABILITY MAP**

BOREL HYDROELECTRIC LICENSE SURRENDER PROJECT
PAGE 4 OF 20

050100
Feet

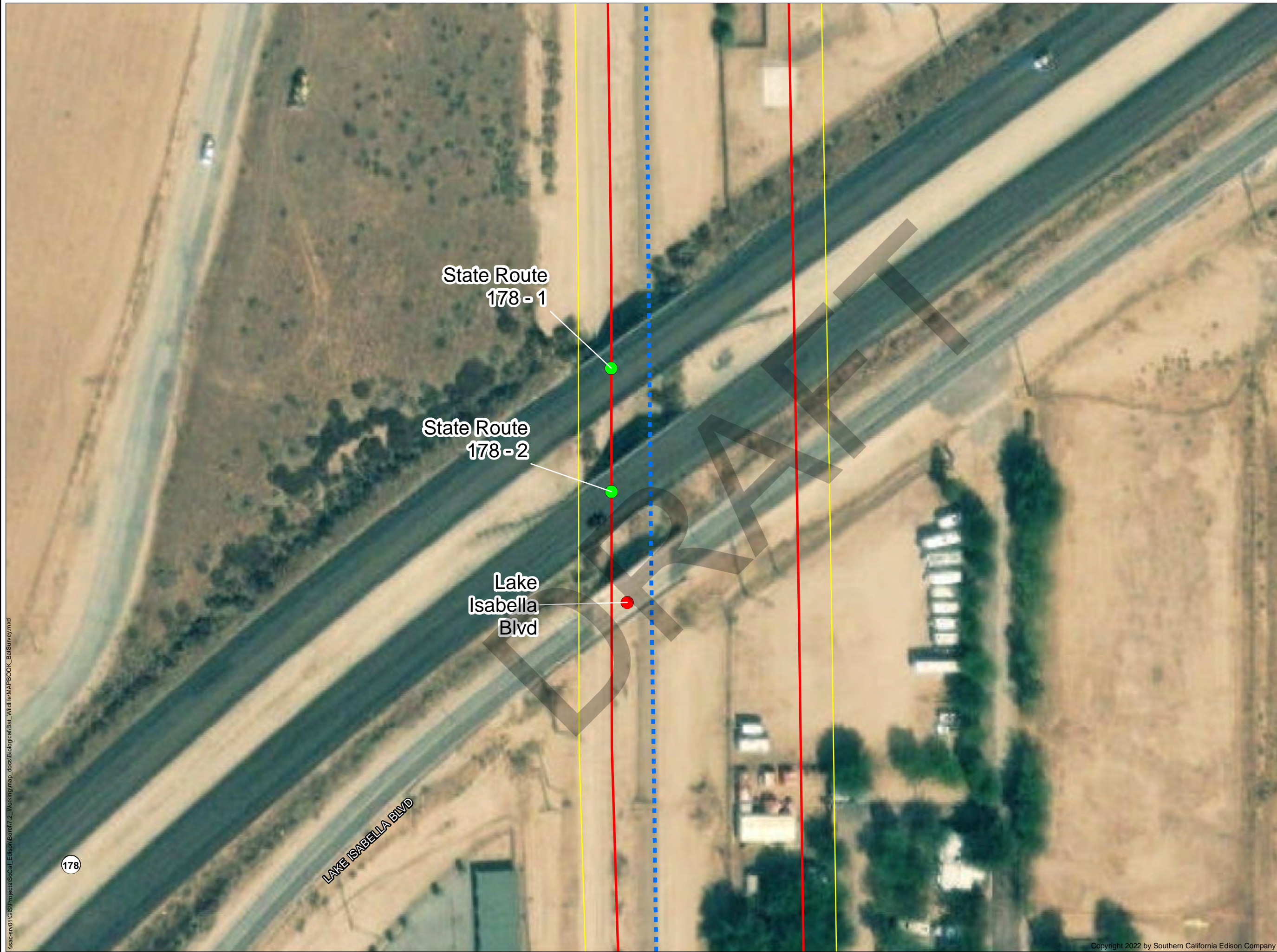
Projection: StatePlane California V FIPS 0405 Feet
Datum: NAD 83

Date: 12/9/2022

Southern California Edison (SCE) has no reason to believe that there are any inaccuracies or defects with information incorporated in this work and make no representations of any kind, including, but not limited to, the warranties of merchantability or fitness for a particular use, nor are any such warranties to be implied, with respect to the information or data, furnished herein. No part of this map may be reproduced or transmitted in any form or by any means, electronic or mechanical, including photocopying and recording system, except as expressly permitted in writing by SCE.

178

Copyright 2022 by Southern California Edison Company



LEGEND

- FERC Project Boundary #382
- Survey Area
- Borel Canal

Bat Habitat Suitability

- Evidence of Roosting Bats Present
- Non-suitable Bat Roost - No Evidence Present

*SOURCE: HDR (2021), SoCal Edison (2021), ESRI Aerial (2021).

SOUTHERN CALIFORNIA EDISON®
An EDISON INTERNATIONAL® Company

BAT HABITAT SUITABILITY MAP

BOREL HYDROELECTRIC LICENSE SURRENDER PROJECT
PAGE 5 OF 20

Projection: StatePlane California V FIPS 0405 Feet
Datum: NAD 83

Date: 12/9/2022

Southern California Edison (SCE) has no reason to believe that there are any inaccuracies or defects with information incorporated in this work and make no representations of any kind, including, but not limited to, the warranties of merchantability or fitness for a particular use, nor are any such warranties to be implied, with respect to the information or data, furnished herein. No part of this map may be reproduced or transmitted in any form or by any means, electronic or mechanical, including photocopying and recording system, except as expressly permitted in writing by SCE.

\\sac-srv01\GIS\Projects\SoCal Edison\Borel\7_2_Working\map_docs\Biological\Bat_Wildlife\MAPBOOK_BatSurvey.mxd



LEGEND

FERC Project Boundary #382

Survey Area


Borel Canal

Bat Habitat Suitability

Non-suitable Bat Roost - No Evidence Present

*SOURCE: HDR (2021), SoCal Edison (2021), ESRI Aerial (2021).





**SOUTHERN CALIFORNIA
EDISON®**
An EDISON INTERNATIONAL® Company

**BAT HABITAT
SUITABILITY MAP**

BOREL HYDROELECTRIC LICENSE SURRENDER PROJECT
PAGE 6 OF 20

050100
Feet

Date: 12/9/2022

Projection: StatePlane California V FIPS 0405 Feet
Datum: NAD 83

Southern California Edison (SCE) has no reason to believe that there are any inaccuracies or defects with information incorporated in this work and make no representations of any kind, including, but not limited to, the warranties of merchantability or fitness for a particular use, nor are any such warranties to be implied, with respect to the information or data, furnished herein. No part of this map may be reproduced or transmitted in any form or by any means, electronic or mechanical, including photocopying and recording system, except as expressly permitted in writing by SCE.

\\sac-srv01\GIS\Projects\SoCal Edison\Borel\7_2_Working\map_docs\Biological\Bat_Wildlife\MAPBOOK_BatSurvey.mxd

Copyright 2022 by Southern California Edison Company



LEGEND

FERC Project Boundary #382

Survey Area


Borel Canal

Bat Habitat Suitability

Non-suitable Bat Roost - No Evidence Present

*SOURCE: HDR (2021), SoCal Edison (2021), ESRI Aerial (2021).






**SOUTHERN CALIFORNIA
EDISON®**
An EDISON INTERNATIONAL® Company

**BAT HABITAT
SUITABILITY MAP**

BOREL HYDROELECTRIC LICENSE SURRENDER PROJECT
PAGE 7 OF 20

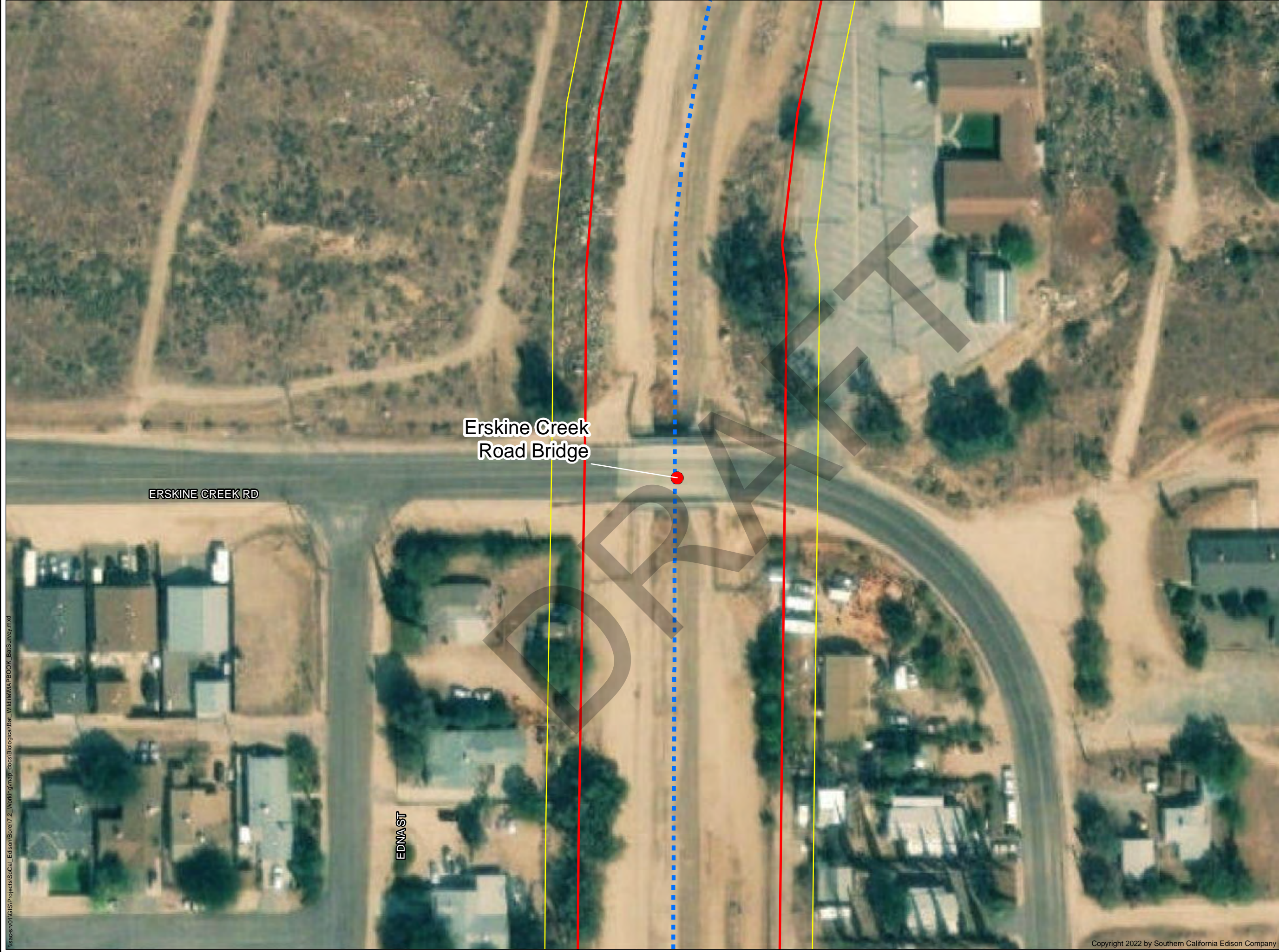


050100
Feet




Projection: StatePlane California V FIPS 0405 Feet
Datum: NAD 83

Southern California Edison (SCE) has no reason to believe that there are any inaccuracies or defects with information incorporated in this work and make no representations of any kind, including, but not limited to, the warranties of merchantability or fitness for a particular use, nor are any such warranties to be implied, with respect to the information or data, furnished herein. No part of this map may be reproduced or transmitted in any form or by any means, electronic or mechanical, including photocopying and recording system, except as expressly permitted in writing by SCE.


\\sac-srv01\GIS\Projects\SoCal_Edison\Borel\7_2_Working\map_docs\Biological\Bat_Wildlife\MAPBOOK_BatSurvey.mxd



LEGEND

-  FERC Project Boundary #382
-  Survey Area
-  Borel Canal

Bat Habitat Suitability

-  Non-suitable Bat Roost - No Evidence Present

*SOURCE: HDR (2021), SoCal Edison (2021), ESRI Aerial (2021).



BAT HABITAT SUITABILITY MAP

BOREL HYDROELECTRIC LICENSE SURRENDER PROJECT
PAGE 8 OF 20

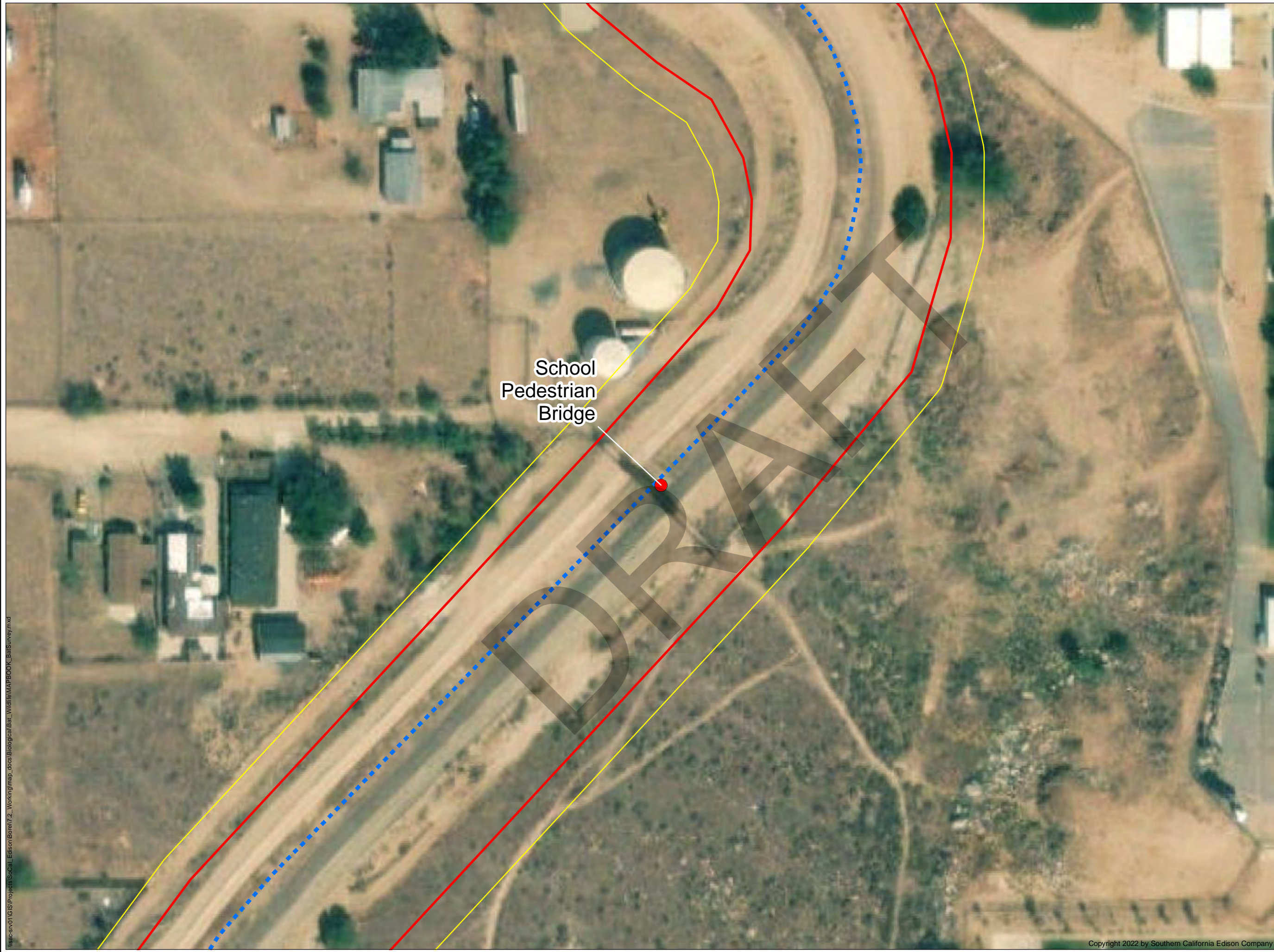


0 50 100
Feet

Date: 12/9/2022

Projection: StatePlane California V FIPS 0405 Feet
Datum: NAD 83

Southern California Edison (SCE) has no reason to believe that there are any inaccuracies or defects with information incorporated in this work and make no representations of any kind, including, but not limited to, the warranties of merchantability or fitness for a particular use, nor are any such warranties to be implied, with respect to the information or data, furnished herein. No part of this map may be reproduced or transmitted in any form or by any means, electronic or mechanical, including photocopying and recording system, except as expressly permitted in writing by SCE.



LEGEND

FERC Project Boundary
#382

Survey Area

Borel Canal

Bat Habitat Suitability

Non-suitable Bat Roost - No
Evidence Present

*SOURCE: HDR (2021), SoCal Edison (2021),
ESRI Aerial (2021).





**BAT HABITAT
SUITABILITY MAP**

BOREL HYDROELECTRIC LICENSE SURRENDER PROJECT
PAGE 9 OF 20



050100
Feet

Projection: StatePlane California V FIPS 0405 Feet
Datum: NAD 83

Date: 12/9/2022




Southern California Edison (SCE) has no reason to believe that there are any inaccuracies or defects with information incorporated in this work and make no representations of any kind, including, but not limited to, the warranties of merchantability or fitness for a particular use, nor are any such warranties to be implied, with respect to the information or data, furnished herein. No part of this map may be reproduced or transmitted in any form or by any means, electronic or mechanical, including photocopying and recording system, except as expressly permitted in writing by SCE.

\\sac-srv01\GIS\Projects\SoCal Edison\Borel\7_2_Working\map_docs\Biological\Bat_Wildlife\MAPBOOK_BatSurvey.mxd


Copyright 2022 by Southern California Edison Company



LEGEND

-  FERC Project Boundary #382
-  Survey Area
-  Borel Canal

Bat Habitat Suitability

-  Non-suitable Bat Roost - No Evidence Present

*SOURCE: HDR (2021), SoCal Edison (2021), ESRI Aerial (2021).



**BAT HABITAT
SUITABILITY MAP**

BOREL HYDROELECTRIC LICENSE SURRENDER PROJECT
PAGE 10 OF 20

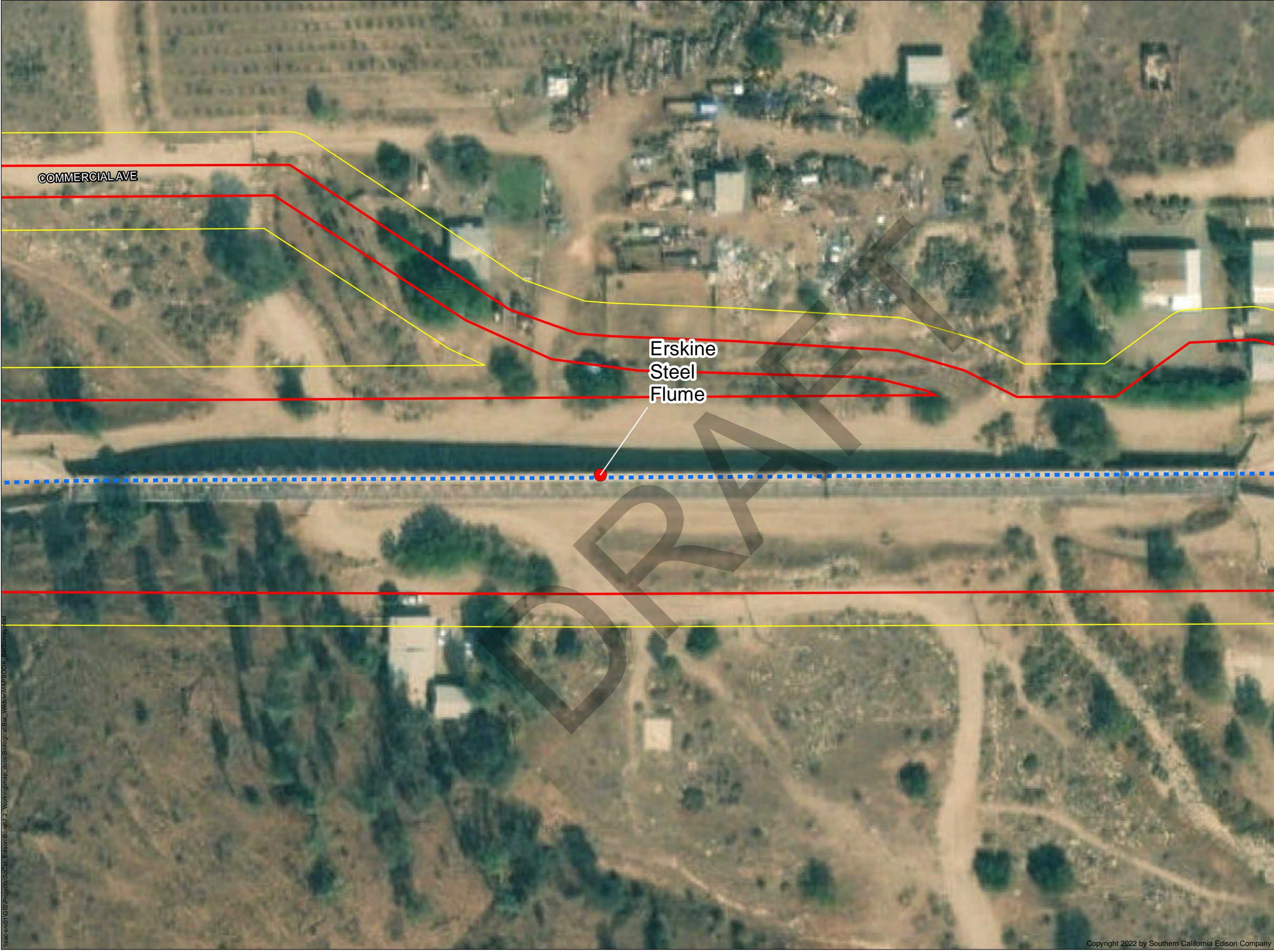


Date: 12/9/2022

0 50 100
Feet

Projection: StatePlane California V FIPS 0405 Feet
Datum: NAD 83

Southern California Edison (SCE) has no reason to believe that there are any inaccuracies or defects with information incorporated in this work and make no representations of any kind, including, but not limited to, the warranties of merchantability or fitness for a particular use, nor are any such warranties to be implied, with respect to the information or data, furnished herein. No part of this map may be reproduced or transmitted in any form or by any means, electronic or mechanical, including photocopying and recording system, except as expressly permitted in writing by SCE.



LEGEND

FERC Project Boundary #382

Survey Area


Borel Canal

Bat Habitat Suitability

Non-suitable Bat Roost - No Evidence Present

*SOURCE: HDR (2021), SoCal Edison (2021), ESRI Aerial (2021).





**SOUTHERN CALIFORNIA
EDISON®**
An EDISON INTERNATIONAL® Company

**BAT HABITAT
SUITABILITY MAP**

BOREL HYDROELECTRIC LICENSE SURRENDER PROJECT
PAGE 11 OF 20

0

50

100

Feet

Date: 12/9/2022

Projection: StatePlane California V FIPS 0405 Feet
Datum: NAD 83

0

50

100

Feet

Date: 12/9/2022

Projection: StatePlane California V FIPS 0405 Feet
Datum: NAD 83

0

50

100

Feet

Date: 12/9/2022

Projection: StatePlane California V FIPS 0405 Feet
Datum: NAD 83

0

50

100

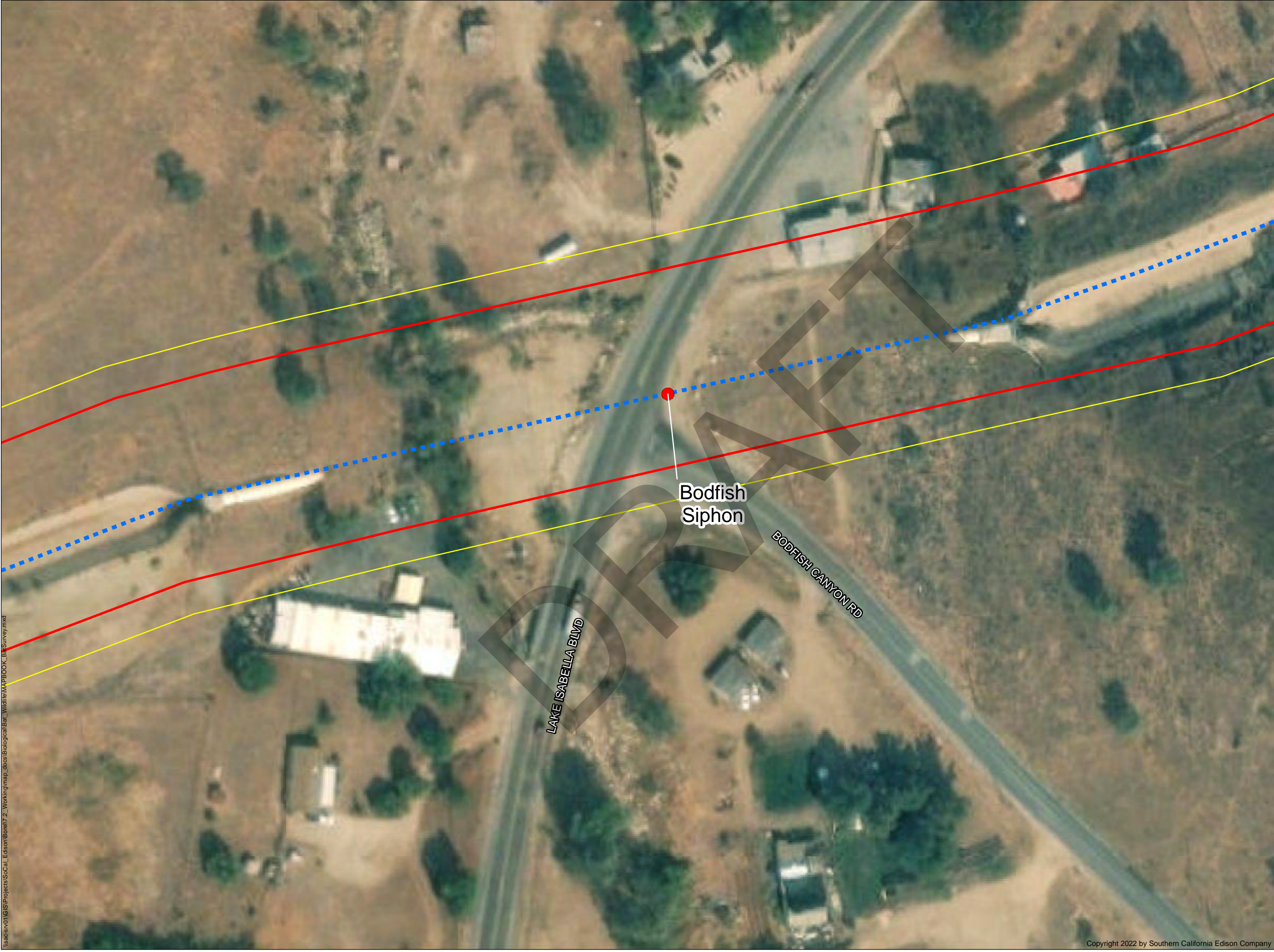
Feet

Date: 12/9/2022

Projection: StatePlane California V FIPS 0405 Feet
Datum: NAD 83

\\sac-sr01\GIS\Projects\SoCal Edison\Borel\7_2_Working\map_docs\Biological\Bat_Wildlife\MAPBOOK_BatSurvey.mxd

Copyright 2022 by Southern California Edison Company



LEGEND

FERC Project Boundary #382

Survey Area


Borel Canal

Bat Habitat Suitability

Non-suitable Bat Roost - No Evidence Present

*SOURCE: HDR (2021), SoCal Edison (2021), ESRI Aerial (2021).






**SOUTHERN CALIFORNIA
EDISON®**
An EDISON INTERNATIONAL® Company

**BAT HABITAT
SUITABILITY MAP**

BOREL HYDROELECTRIC LICENSE SURRENDER PROJECT
PAGE 12 OF 20



050100
Feet

Projection: StatePlane California V FIPS 0405 Feet
Datum: NAD 83

Southern California Edison (SCE) has no reason to believe that there are any inaccuracies or defects with information incorporated in this work and make no representations of any kind, including, but not limited to, the warranties of merchantability or fitness for a particular use, nor are any such warranties to be implied, with respect to the information or data, furnished herein. No part of this map may be reproduced or transmitted in any form or by any means, electronic or mechanical, including photocopying and recording system, except as expressly permitted in writing by SCE.

\\sac-srv01\GIS\Projects\SoCal_Edison\Borel\7_2_Working\map_docs\Biological\Bat_Wildlife\MAPBOOK_BatSurvey.mxd

Copyright 2022 by Southern California Edison Company



LEGEND

FERC Project Boundary #382

Survey Area


Borel Canal

Bat Habitat Suitability

Evidence of Roosting Bats Present

*SOURCE: HDR (2021), SoCal Edison (2021), ESRI Aerial (2021).






**SOUTHERN CALIFORNIA
EDISON®**
An EDISON INTERNATIONAL® Company

**BAT HABITAT
SUITABILITY MAP**

BOREL HYDROELECTRIC LICENSE SURRENDER PROJECT
PAGE 13 OF 20



050100
Feet

Date: 12/9/2022

Projection: StatePlane California V FIPS 0405 Feet
Datum: NAD 83




Southern California Edison (SCE) has no reason to believe that there are any inaccuracies or defects with information incorporated in this work and make no representations of any kind, including, but not limited to, the warranties of merchantability or fitness for a particular use, nor are any such warranties to be implied, with respect to the information or data, furnished herein. No part of this map may be reproduced or transmitted in any form or by any means, electronic or mechanical, including photocopying and recording system, except as expressly permitted in writing by SCE.

\\sac-srv01\GIS\Projects\SoCal_Edison\Borel7_2_Working\map_docs\Biological\Bat_Wildlife\MAPBOOK_BatSurvey.mxd


Copyright 2022 by Southern California Edison Company



LEGEND

-  FERC Project Boundary
 #382
 Survey Area
 Borel Canal

Bat Habitat Suitability

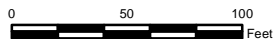
-  Evidence of Roosting Bats Present

*SOURCE: HDR (2021), SoCal Edison (2021)
ESRI Aerial (2021).



BAT HABITAT SUITABILITY MAP

BOREL HYDROELECTRIC LICENSE SURRENDER PROJECT
PAGE 14 OF 20



Date: 12/9/2022

Projection: StatePlane California V FIPS 0405 Feet
Datum: NAD 83

Southern California Edison (SCE) has no reason to believe that there are any inaccuracies or defects with information incorporated in this work and make no representations of any kind, including, but not limited to, the warranties of merchantability or fitness for a particular use, nor are any such warranties to be implied, with respect to the information or data, furnished herein. No part of this map may be reproduced or transmitted in any form or by any means, electronic or mechanical, including photocopying and recording system, except as expressly permitted in writing by SCE.



LEGEND

FERC Project Boundary
#382

Survey Area

Borel Canal

Bat Habitat Suitability

Evidence of Roosting Bats
Present

*SOURCE: HDR (2021), SoCal Edison (2021), ESRI Aerial (2021).





**BAT HABITAT
SUITABILITY MAP**

BOREL HYDROELECTRIC LICENSE SURRENDER PROJECT
PAGE 15 OF 20



Projection: StatePlane California V FIPS 0405 Feet
Datum: NAD 83

Southern California Edison (SCE) has no reason to believe that there are any inaccuracies or defects with information incorporated in this work and make no representations of any kind, including, but not limited to, the warranties of merchantability or fitness for a particular use, nor are any such warranties to be implied, with respect to the information or data, furnished herein. No part of this map may be reproduced or transmitted in any form or by any means, electronic or mechanical, including photocopying and recording system, except as expressly permitted in writing by SCE.




\\sac-sr1\GIS\Projects\SoCal_Edison\Borel\7_2_Working\map_docs\Biological\Bat_Wildlife\MAPBOOK_BatSurvey.mxd

Copyright 2022 by Southern California Edison Company




\\sac-srv01\GIS\Projects\SoCal Edison\Borel\7_2_Working\map_docs\Biological\Bat_Wildlife\MAPBOOK_BatSurvey.mxd

LEGEND

-  FERC Project Boundary #382
-  Survey Area
-  Borel Canal

Bat Habitat Suitability

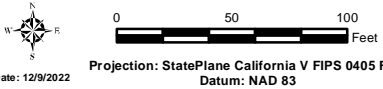
-  Evidence of Roosting Bats Present

*SOURCE: HDR (2021), SoCal Edison (2021), ESRI Aerial (2021).



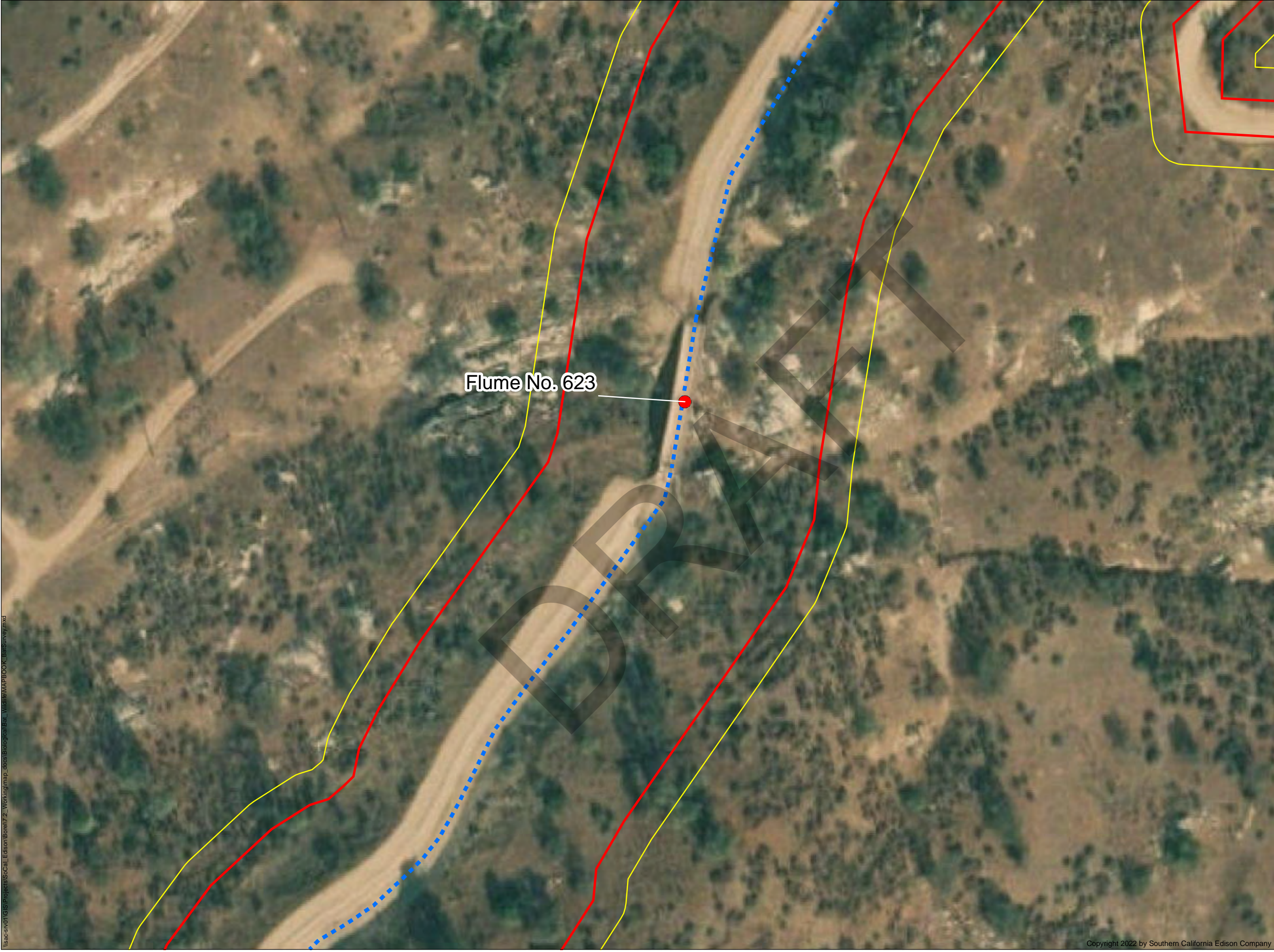
**BAT HABITAT
SUITABILITY MAP**

BOREL HYDROELECTRIC LICENSE SURRENDER PROJECT
PAGE 16 OF 20





Southern California Edison (SCE) has no reason to believe that there are any inaccuracies or defects with information incorporated in this work and make no representations of any kind, including, but not limited to, the warranties of merchantability or fitness for a particular use, nor are any such warranties to be implied, with respect to the information or data, furnished herein. No part of this map may be reproduced or transmitted in any form or by any means, electronic or mechanical, including photocopying and recording system, except as expressly permitted in writing by SCE.


\\sac-sr01\GIS\Projects\SoCal_Edison\Borel\7_2_Working\map_docs\Biological\Bat_Wildlife\MAPBOOK_BatSurvey.mxd




LEGEND

 FERC Project Boundary #382

 Survey Area


 Borel Canal

Bat Habitat Suitability

 Non-suitable Bat Roost - No Evidence Present

*SOURCE: HDR (2021), SoCal Edison (2021), ESRI Aerial (2021).

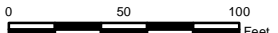





**SOUTHERN CALIFORNIA
EDISON®**
An EDISON INTERNATIONAL® Company

**BAT HABITAT
SUITABILITY MAP**

BOREL HYDROELECTRIC LICENSE SURRENDER PROJECT
PAGE 17 OF 20



050100
Feet




Projection: StatePlane California V FIPS 0405 Feet
Datum: NAD 83

Southern California Edison (SCE) has no reason to believe that there are any inaccuracies or defects with information incorporated in this work and make no representations of any kind, including, but not limited to, the warranties of merchantability or fitness for a particular use, nor are any such warranties to be implied, with respect to the information or data, furnished herein. No part of this map may be reproduced or transmitted in any form or by any means, electronic or mechanical, including photocopying and recording system, except as expressly permitted in writing by SCE.


\\sac-sr01\GIS\Projects\SoCal Edison\Borel7.2_Working\map_docs\Biological\Bat_Wildlife\MAPBOOK_BatSurvey.mxd



LEGEND

-  FERC Project Boundary #382
-  Survey Area
-  Borel Canal

Bat Habitat Suitability

-  Evidence of Roosting Bats Present

*SOURCE: HDR (2021), SoCal Edison (2021), ESRI Aerial (2021).



BAT HABITAT SUITABILITY MAP

BOREL HYDROELECTRIC LICENSE SURRENDER PROJECT
PAGE 18 OF 20

 0 50 100 Feet
Projection: StatePlane California V FIPS 0405 Feet
Datum: NAD 83
Date: 12/9/2022

Southern California Edison (SCE) has no reason to believe that there are any inaccuracies or defects with information incorporated in this work and make no representations of any kind, including, but not limited to, the warranties of merchantability or fitness for a particular use, nor are any such warranties to be implied, with respect to the information or data, furnished herein. No part of this map may be reproduced or transmitted in any form or by any means, electronic or mechanical, including photocopying and recording system, except as expressly permitted in writing by SCE.



LEGEND


FERC Project Boundary #382

Survey Area

Bat Habitat Suitability


*SOURCE: HDR (2021), SoCal Edison (2021), ESRI Aerial (2021).



SOUTHERN CALIFORNIA
EDISON[®]
An EDISON INTERNATIONAL[®] Company

BAT HABITAT
SUITABILITY MAP

BOREL HYDROELECTRIC LICENSE SURRENDER PROJECT
PAGE 19 OF 20

050100
Feet

Projection: StatePlane California V FIPS 0405 Feet
Datum: NAD 83

Southern California Edison (SCE) has no reason to believe that there are any inaccuracies or defects with information incorporated in this work and make no representations of any kind, including, but not limited to, the warranties of merchantability or fitness for a particular use, nor are any such warranties to be implied, with respect to the information or data, furnished herein. No part of this map may be reproduced or transmitted in any form or by any means, electronic or mechanical, including photocopying and recording system, except as expressly permitted in writing by SCE.

\\sac-sr01\GIS\Projects\SoCal_Edison\Borel\7_2_Working\map_docs\Biological\Bat_Wildlife\MAPBOOK_BatSurvey.mxd



LEGEND

FERC Project Boundary #382

Survey Area

Borel Canal


Bat Habitat Suitability

Evidence of Roosting Bats Present

Possible Bat Roost - No Evidence Present

*SOURCE: HDR (2021), SoCal Edison (2021), ESRI Aerial (2021).

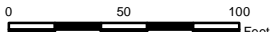





**SOUTHERN CALIFORNIA
EDISON®**
An EDISON INTERNATIONAL® Company

**BAT HABITAT
SUITABILITY MAP**

BOREL HYDROELECTRIC LICENSE SURRENDER PROJECT
PAGE 20 OF 20



Projection: StatePlane California V FIPS 0405 Feet
Datum: NAD 83

Southern California Edison (SCE) has no reason to believe that there are any inaccuracies or defects with information incorporated in this work and make no representations of any kind, including, but not limited to, the warranties of merchantability or fitness for a particular use, nor are any such warranties to be implied, with respect to the information or data, furnished herein. No part of this map may be reproduced or transmitted in any form or by any means, electronic or mechanical, including photocopying and recording system, except as expressly permitted in writing by SCE.

\\sac-srv01\GIS\Projects\SoCal Edison\Borel\7.2_Working\map_docs\Biological\Bat_Wildlife\MAPBOOK_BatSurvey.mxd

Copyright 2022 by Southern California Edison Company