

## **Attachment C: Town Hall Presentation**

DRAFT

PAGE INTENTIONALLY LEFT BLANK

DRAFT



# Borel Hydroelectric Project Townhall




FERC Project No. 382

Southern California Edison      May 13, 2021



## Welcome to the Borel Hydroelectric Project Meeting

**Please note:**

- Attendees will be muted upon entry
- The chat box is deactivated
- The Q&A box will be opened during the Q&A period after the presentation
- Detailed directions for how to ask questions will be shown again
  -  raise your hand
  -  write in the Q&A box
  -  callers press \*3
- Technical difficulties – WebEx 866.229.3239

**Thanks for joining us – we will begin momentarily**



## **Agenda**

Welcome & Team Introductions

Meeting Objectives

Project Overview

Timeline & Process

Field Activities

Decommissioning

Stay Engaged

Q & A



## **Project Team**

### **Southern California Edison**

- Martin Ostendorf - Sr. Licensing Manager
- Dave Moore - Licensing Project Manager
- Cal Rossi - Public Relations Manager
- Dan Keverline - Sr. Operations Manager

### **HDR Engineering**

- Jim Lynch - Strategic Advisor
- Jarvis Caldwell - Project Manager
- Kristi Shepherd - Outreach Team
- Melissa Diamant - Outreach Team

## **Who's in the room tonight?**



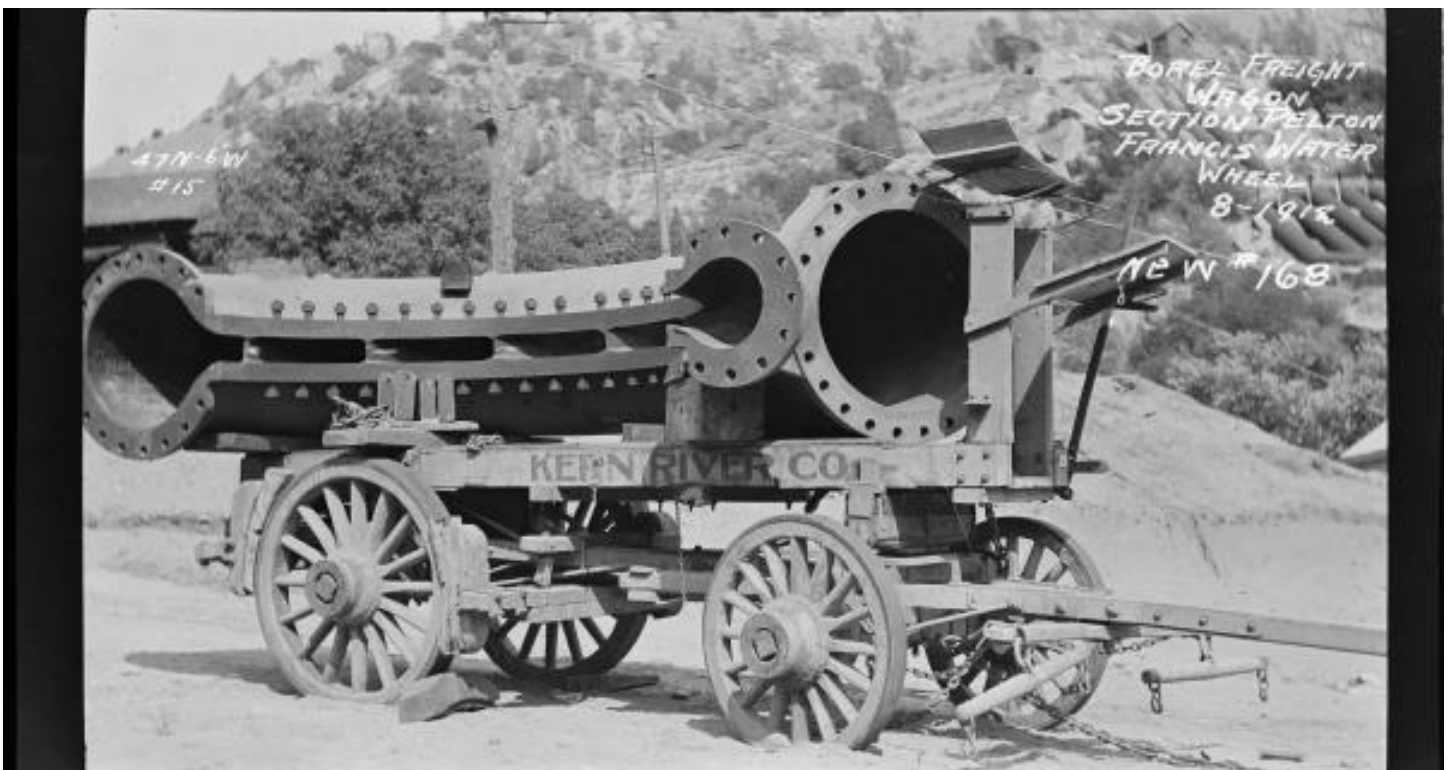
## Meeting Objectives

- Share SCE intentions and estimated timeline
- Inform about the regulatory process

- Describe decommissioning
- Ensure you know where to go for answers

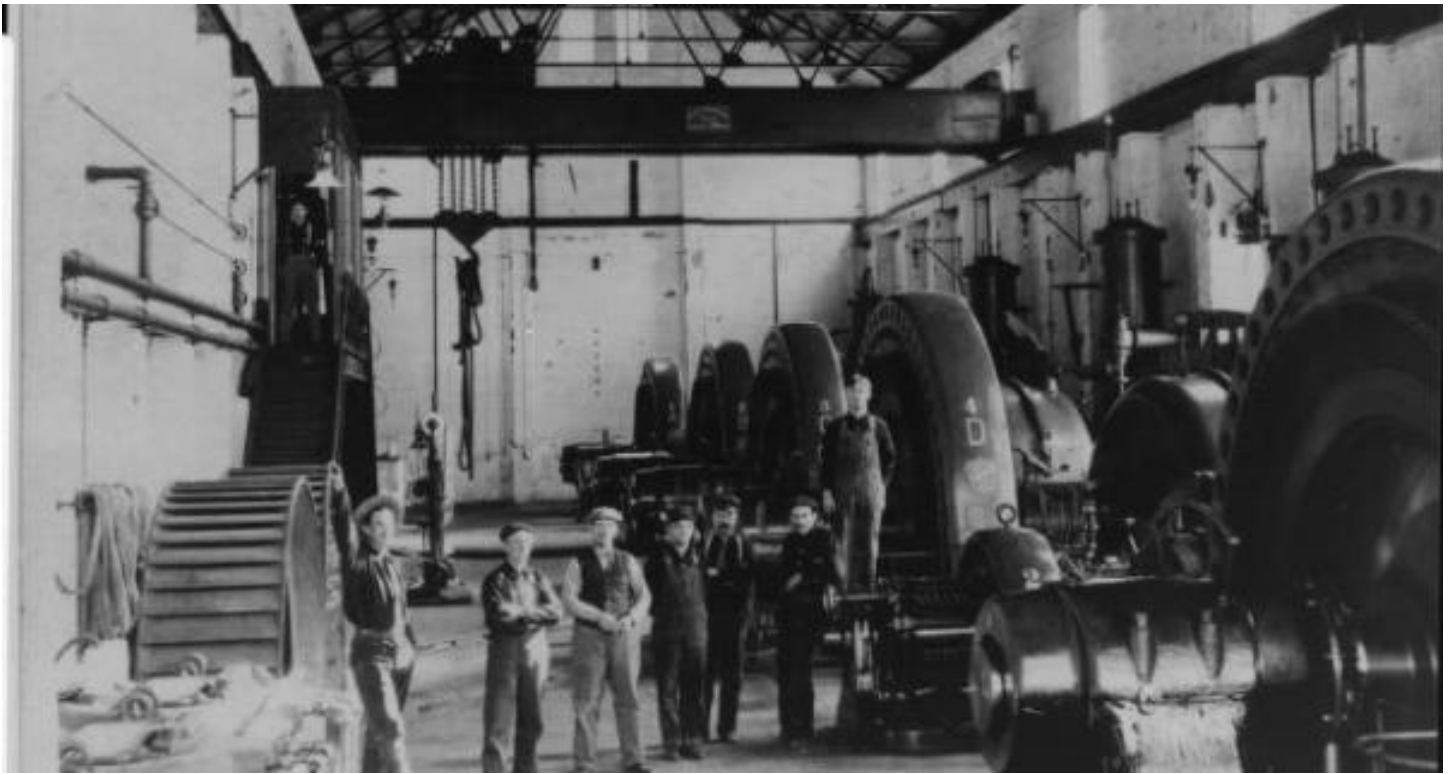


## Project Overview









An infographic on a dark background. On the left, a white line-art icon depicts a winding canal with three water droplets above it. To its right, the number '11.2' is displayed in a large, bold font, with 'MILE LONG CANAL' written in smaller text below it. Further right, there are two white icons of electrical plugs. To their right, the number '12' is displayed in a large, bold font, with 'MEGAWATTS GENERATED' written in smaller text below it.



## 2006

The Army Corps of Engineers began a dam safety study and determined the Auxiliary Dam didn't meet earthquake safety standards; they then began a dam safety modification project.

## 2017

The Army Corps of Engineers began seismic safety modifications to the Auxiliary Dam which resulted in the condemnation of SCE's canal conduit through the dam. This conduit was abandoned in place by filling it with concrete, rendering the hydroelectric project nonfunctional.



## Today

Because of that, SCE is preparing to file a License Surrender Application with FERC; the first regulatory step in the decommissioning process.

SCE has always maintained the hydroelectric project for public safety and will continue to do so until the project is fully decommissioned.



### **What's in the Surrender Application?**

- Proposed decommissioning plan
- Environmental Report
- Proposed mitigation and enhancements
- Proposed post decommissioning monitoring

FERC will review and process the Surrender Application to ensure safety and environmental concerns are addressed.



## Timeline and Process

### Surrender and Decommission





## **Field Activities**

### **Environmental Resource Information Gathering**

To inform the Surrender Application, teams of specialists will be surveying the canal corridor over the next two of years. They will be looking at a number of things including wildlife habitat, botanical resources and streams and wetlands in the vicinity of the canal.

### **Cultural and Tribal Resources Data Gathering**

As a part of this project, teams of specialists will be evaluating the existing cultural and tribal resources data available, field surveys and engaging with Tribes and other stakeholders to inform decommissioning alternatives.



## Decommissioning



### What's involved in a Decommissioning?

Decommissioning the Borel Project means that SCE will deconstruct, dismantle, or abandon project features and restore

lands associated with the project, in consultation with Stakeholders.

## Range of Possible Options

- Abandon in place
- Abandon in place with modification
- Demolish, bury in place
- Demolish, haul off site



## What that means for you

- Future construction activity
- Opportunities to comment on the License Surrender Application
- Landowners with SCE easements will be contacted in June

**SCE believes that the community will benefit from an improved corridor. The final plan will depend on discussions with Kern County, Landowners and Stakeholders.**



### **Benefits of Decommissioning**

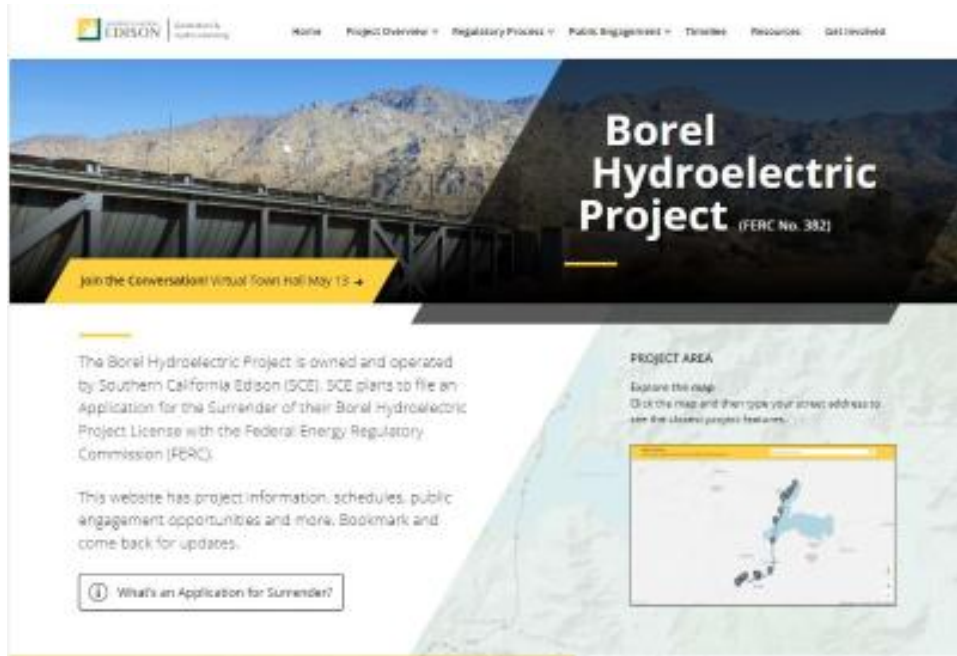
- Remediate any environmental, cultural, tribal, historic and socio-economic impacts associated with the existing project
- Restore public and private lands to a satisfactory condition
- Remove land easements and right of ways associated with project roads and facilities
- Address potential safety risks associated with the project facilities



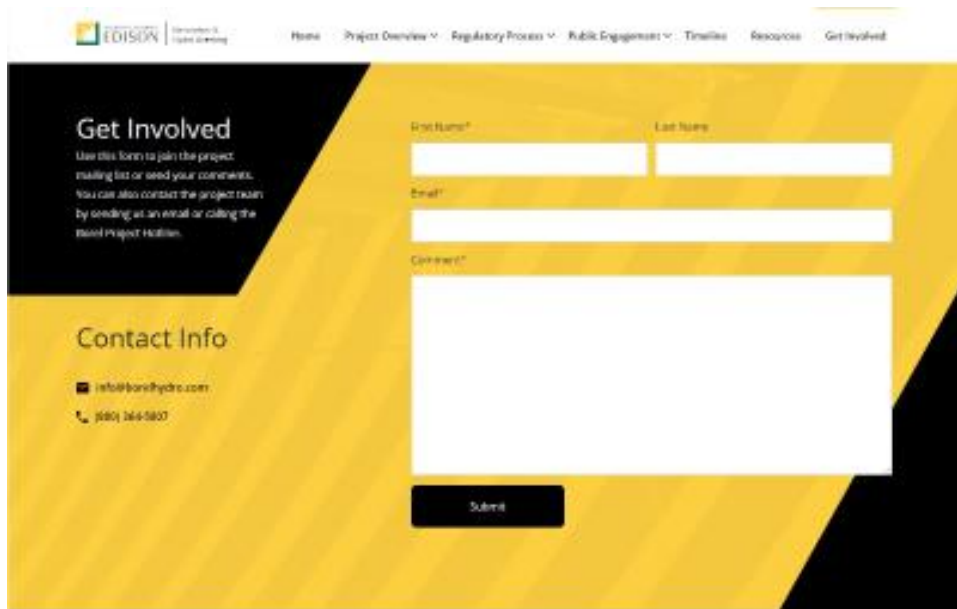


**Stay Engaged & Informed**

**Project Website: [www.borelhydro.com](http://www.borelhydro.com)**



## Stay engaged & contact us



## Q&A



## How to Participate in Q&A

### RAISE YOUR HAND

Select Raise Hand

**Internet:** then

**WebEx Software:** then

**Mobile App:** then

Wait to be called upon and unmuted  
Lower Hand after speaking

### ASK A QUESTION

Select Appropriate Icon

**Internet:**

**WebEx Software:** then Q&A

**Mobile App:** then

Type into Q&A box, your question  
will be read by team

### DIALED-IN BY PHONE

• Press \*3 to Raise/Lower Hand

**Thank you for joining tonight!**

**Contact us anytime and we will respond within 5 working days.**

**Email: [info@borelhydro.com](mailto:info@borelhydro.com)**

**Website: [borelhydro.com](http://borelhydro.com)**

**Call: [800. 364.5807](tel:800.364.5807)**

Powered by ArcGIS StoryMaps